



Contents

1. [Scope of Works / Description of Systems of Plant & Equipment](#)

2. [Suppliers and Manufacturers Directory](#)

3. [Manufacturers Information](#)

4. [As Built Drawings](#)

5. [Testing & Commissioning Results and Certificates](#)

6. [Operation](#)

7. [Maintenance Procedures and Planned Maintenance](#)

8. [Spares Information](#)

9. [Guarantees and Warranties](#)

10. [Replacement Strategy](#)

11. [Demolition Decommissioning or Disposal](#)





1. Scope of Works / Description of Systems of Plant & Equipment

Scope of Work:

To lay Carpet Tiles in Offices and Staircase Areas.





2. Suppliers and Manufacturers Directory

Supplier:
Interface Europe,
10th Floor,
The Colmore Building,
20 Colmore Row,
Birmingham,
B4 6AT





3. Manufacturers Information



Interface European Manufacturing BV reserve the right to change or modify specifications.
Die Interface European Manufacturing BV behält sich das Recht vor, Produktspezifikationen zu ändern oder entsprechend anzupassen.
Interface European Manufacturing BV se reserva el derecho a modificar las especificaciones arriba referenciadas.
Interface European Manufacturing BV se réserve la possibilité de modifier les caractéristiques ci-dessus.
Interface European Manufacturing BV behoudt zich het recht voor de specificaties te allen tijde aan te passen.
Interface European Manufacturing BV si riserva il diritto di modificare le proprie specifiche tecniche senza preavviso.

Europe, Middle East & Africa

AE	+971 4 399 6934
AT	+41 44 913 68 00
BA	+387 33 522 534
BE	+32 2 475 27 27
BG	+359 2 808 303
BY	+375 17 226 75 14
CH	+41 44 913 68 00
CZ	+42 0 233 087 111
DE	+49 2151 3718 0
DK	+45 33 79 70 55
ES	+34 932 418 750
FR	+33 1 58 10 20 20
HR	+385 14 62 30 63
HU	+36 1 349 6545
IE	+353 1 679 8466
IL	+972 546602102
IT	+39 02 890 93678
KZ	+7 495 234 57 27
NL	+31 33 277 5555
ME	+381 11 414 92 00
MK	+389 2 323 01 89
NO	+47 23 12 01 70
PL	+48 500 151 101
PT	+351 217 122 740
RO	+40 21 317 12 40/42/43/44
RS	+381 11 414 92 00
RU	+7 495 234 57 27
SA	+966 500615423
SE	08-241 230
SK	+421 911 104 073
SI	+386 1 520 0500 +386 8 20 54 007
TR	+90 212 365 5506
UA	+38(044)238 27 67
UK	+44 (0)1274 698503
ZA	+27 11 6083324

www.interface.com



Mission Zero:
our promise to eliminate any
negative impact our company
may have on the environment
by the year 2025.

Transformation

Interface®

Transformation

EN

Imitating nature for beauty and efficiency

Transformation brings the random beauty of nature into your space. The non-directional installation means less waste, more flexibility and easier maintenance. The refreshed colour range features neutral and bright tones and makes Transformation a versatile choice, fit for any commercial interior.

DE

Schönheit und Effizienz nach dem Vorbild der Natur

Bringen Sie mit Transformation die natürliche Schönheit des Zufalls in Ihre Räumlichkeiten. Die richtungsfreie Installation sorgt für minimalen Verschnitt, höhere Flexibilität und besonders einfache Pflege. Die neue Farbpalette besteht aus neutralen und kräftigen Farbtönen und macht Transformation zu einer vielseitigen Bodenbelagslösung für Innenräume im Objektbereich.



Transformation

FR

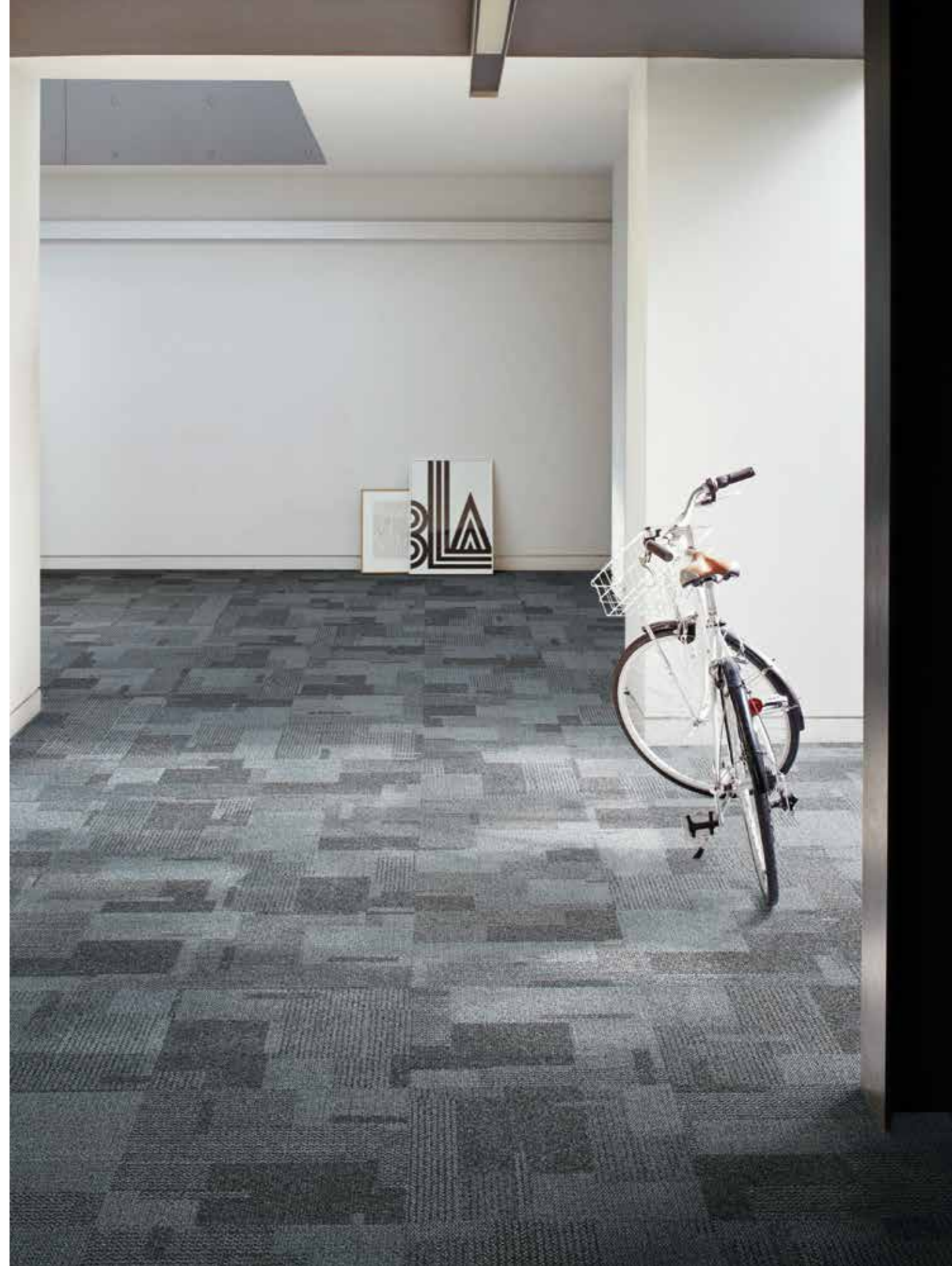
Imiter la nature pour offrir beauté et efficacité

Transformation apporte la beauté aléatoire de la nature dans votre espace. Sa pose non directionnelle permet de réduire les chutes, d'améliorer la flexibilité et de simplifier la maintenance. Les couleurs rafraîchies présentent des tons neutres et clairs et font de Transformation un choix polyvalent, qui convient à tout type d'espace tertiaire.

NL

Schoonheid en efficiency met hulp van de natuur

Transformation brengt de onvoorspelbare schoonheid van de natuur naar binnen. Non-directional installatie zorgt voor minder afval, meer flexibiliteit en eenvoudiger onderhoud. Het nieuwe kleurenaanbod biedt zowel neutrale als heldere kleuren en maakt Transformation een veelzijdige keuze, geschikt voor elke commerciële ruimte.



Transformation

ES

Imitando a la naturaleza por belleza y eficiencia

Transformation trae la belleza aleatoria de la naturaleza a tu espacio. La instalación no direccional significa menos residuos, más flexibilidad y facilidad de mantenimiento. La gama de renovados colores en tonos neutros y azules hace que Transformation sea una opción versátil, apta para cualquier tipo de espacio comercial interior.

SE

Imiterar naturens skönhet och effektivitet

Transformation låter naturens skönhet återspeglas i dina lokaler. Den kan installeras slumpmässigt vilket innebär mindre spill, mer flexibilitet och enklare underhåll. Den uppdaterade färgskalan innehåller både neutrala och starka toner, vilket gör Transformation till ett mångsidigt val, passande för alla offentliga miljöer.



Transformation Colourline



1628068 OATMEAL



1628069 MANILLA



1628063 SHELL



1628011 RIVER



1628072 SAXON



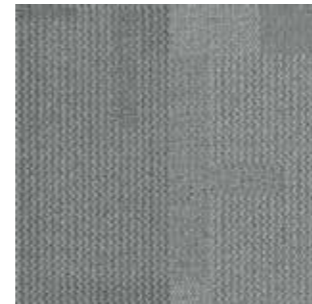
1628024 LAVA



1628004 MEADOW



1628019 WADI



1628064 CLAY



1628065 GABBRO



1628073 BARING



1628016 TROPICS



1628014 DESERT



1628029 PLANTATION



1628013 STEPPE



1628010 FERN



1628020 AMAZON



1628026 MOORLAND



1628070 PARCHMENT



1628075 TRUFFLE



1628066 PEWTER



1628067 NIGHTSHADE



1628074 AZURE



1628025 PASTURE

Product Definition	Tufted Patterned Structured Loop Tile
Konstruktion	Tuftgemusterte strukturierte Schlingenqualität
Descripción	Moqueta modular tufting bucle estructurado con diseño
Description	Dalle de moquette à velours tufté bouclé structuré à motifs
Type	Getufte gedessineerde gestructureerde bouclé
Descrizione	Bouclé tufted strutturato

Pile Material	100% Solution Dyed Nylon, contains recycled content
Polfasermaterial	100% Solution Dyed Polyamid, enthält recycelte Anteile
Composición Fibra	100% Poliamida tintada en masa, con contenido reciclado
Composition	100% Polyamide teint masse, contenant des éléments recyclés
Poolmateriaal	100% Solution Dyed Nylon, bevat gerecycled material
Fibra	100% Poliammide tinta in massa, contiene ugualmente materiale riciclato

Pile Yarn Weight / Poleinsatzgewicht / Peso Fibra / Poids de fibre / Poolinzetgewicht / Peso Felpa	576 g/m ² ± 5%
Total Weight / Gesamtgewicht / Peso Total / Poids total / Totaalgewicht / Peso Totale	4494 g/m ² ± 5%
Pile Height / Polschichtdicke / Altura Fibra / Hauteur de la fibre / Poolhoogte / Altezza Felpa	3,3 mm ± 0,3 mm
Total Thickness / Gesamtdicke / Espesor Total / Epaisseur totale / Totale dikte / Altezza Totale	6,7 mm ± 0,5 mm
Gauge/Ends 10 cm / Teilung x 10 cm / Galga x10 cm / Jauge-Rangs par 10 cm / Rijen per 10 cm / Serraggio x 10 cm	1/12 – 47,2
Tufts per m² / Noppenzahl/m ² / Puntadas m ² / Densité du tuft par m ² / Aantal noppen per m ² / Densità Punti	167.560 ± 5%
Backing Type / Rückenkonstruktion / Soporte / Sous-couche / Ruguitvoering / Sottofondo	Graphlex®
Wear Classification / Beanspruchungsklasse / Clasificación al tráfico / Classement d'usage et de confort / Gebruiksintensiteit / Resistenza all'usura	Heavy Contract (EN 1307) Class 33 / LC2

Radiant Panel / Scherentflammbarkeit / Clasificación Al Fuego / Classement feu / De Radiant Panel Test / Valutazione delle proprietà ignifughe	(EN ISO 9239-1) Euroclass Bfl s1 (EN 13501-1)					
Dimensional Stability / Dimensionsstabilität / Estabilidad Dimensional / Stabilité dimensionnelle / Dimensionele stabiliteit / Test Stabilità dimensionale	≤ 0,2% (EN 986)					
Impact Sound Insulation (ΔL_w) / Trittschallverbesserungsmaß / Impacto Aislamiento Acústico / Réduction du bruit d'impact / Contactgeluid absorptie / Isolamento all'impatto acustico	25 dB (EN ISO 10140-3)					
Rating of Sound Absorption / Gewichteter Schallabsorptionskoeffizient / Clasificación de Absorción de Sonido / Coefficient d'absorption acoustique / Waarde geluidsabsorptie / Valutazione dell'assorbimento acustico	α _w 0,20 (EN ISO 11654)					
Sound Absorption / Schallabsorptionsgrad / Absorción de Sonido / Absorption acoustique / Geluidsabsorptie / Assorbimento acustico						
125Hz	250Hz	500Hz	1000Hz	2000Hz	4000Hz	(EN ISO 354)
0,01	0,05	0,08	0,22	0,34	0,44	α _s

Style 1628 4m² - 16 tiles per box (50 x 50 cm ± 0,15%)

Interface European Manufacturing BV reserve the right to change or modify specifications.

Interface European Manufacturing BV behält sich das Recht vor, Produktspezifikationen zu ändern oder entsprechend anzupassen.

Interface European Manufacturing BV se reserva el derecho a modificar las especificaciones arriba referenciadas.

Interface European Manufacturing BV se réserve la possibilité de modifier les caractéristiques ci-dessus.

Interface European Manufacturing BV behoudt zich het recht voor de specificaties te allen tijde aan te passen.

Interface European Manufacturing BV si riserva il diritto di modificare le proprie specifiche tecniche senza preavviso.

For full environment data, visit:
www.interface.com/eds
Visit our design blog at:
www.designwithpurposeblog.com

Light Values

Product	Colour No	Colour Name	L Value*	Y Value*
Transformation	1628004	Meadow	50,6	18,9
	1628010	Fern	29,1	5,9
	1628011	River	39,0	10,7
	1628013	Steppe	34,4	8,2
	1628014	Desert	43,1	13,2
	1628019	Wadi	44,7	14,4
	1628020	Amazon	28,9	5,8
	1628029	Plantation	37,9	10,0
	1628063	Shell	55,6	23,5
	1628064	Clay	49,6	18,1
	1628065	Gabbro	37,2	9,7
	1628066	Pewter	30,4	6,4
	1628067	Nightshade	21,9	3,5
	1628068	Oatmeal	61,5	29,8
	1628069	Manilla	55,4	23,3
	1628070	Parchment	46,3	15,5
	1628072	Saxon	37,2	9,6
	1628073	Baring	30,6	6,5
	1628074	Azure	27,5	5,3
	1628075	Truffle	26,9	5,1
	1628016	Tropics	24,7	4,3
	1628024	Lava	32,5	7,3
	1628025	Pasture	33,9	7,9
	1628026	Moorland	29,7	6,1

* **Light Value:** L Value = L according to CIE L*a*b* colour space, Y Value = Light Reflectance Value according to BS 8493

Lichtreflexionswerte: L-Wert = L gemäß CIE L*a*b* Farbspektrum, Y-Wert = Lichtreflexionswert gemäß British Standard BS 8493

Valores de Reflectancia de Luz: Valor L = L según CIE L*a*b* espacio de color, Valor Y = Valor de reflectancia de luz según el estándar británico BS 8493

Valeurs concernant la lumière: Valeur L = L faisant référence à la méthode CIE L*a*b* pour la couleur, Valeur Y = Valeurs de réflectance de la lumière selon le British Standard BS 8493

Licht waarden: L Waarde = L volgens CIE L*a*b*kleurruimte, Y Waarde = Licht Reflectie Waarde volgens BS 8493

Indici di riflettanza alla luce: Indice L = L secondo CIE L*a*b* colour space, Indice Y = Indice di riflettanza alla luce secondo la norma BS 8493

We have tried our very best to accurately represent product colours. However, due to the nature of printed materials, colour of actual products may vary slightly. Please request a sample to see actual product colour.

Wir versuchen die Farben so naturgetreu wie möglich wiederzugeben. Farbabweichungen lassen sich jedoch nicht ausschliessen. Bitte fordern Sie ein Muster an, um sich von der tatsächlichen Farbe zu überzeugen.

Hemos intentado representar con la máxima precisión posible los colores del producto. Sin embargo, debido a la naturaleza de los materiales impresos, el color de los productos reales puede variar ligeramente. Por favor, solicita una muestra para ver el color real del producto.

Les couleurs présentées se rapprochent au maximum des coloris réels. Toutefois, les procédés d'impression des matériaux peuvent entraîner une légère variation du coloris. Merci de demander un échantillon pour constater la couleur des produits.

Wij hebben getracht de productkleuren zo goed mogelijk te reproduceren. De kleuren van geprint materiaal kunnen echter altijd enigszins afwijken. Vraag altijd stalenmateriaal aan om de daadwerkelijke kleur te beoordelen.

Vi har gjort vårt bästa för att presentera korrekta produktfärger. Emellertid, på grund av typen av tryckt material, kan färgen på faktiska produkter variera något. Beställ gärna ett prov för att se aktuell produktfärg.



4. As Built Drawings

N/A





5. Testing & Commissioning Results and Certificates

N/A





6. Operation

N/A





7. Maintenance Procedures and Planned Maintenance



A grayscale photograph of a person in uniform using a carpet cleaning machine on a carpeted floor. The person is wearing a light-colored shirt and dark trousers with a belt. The machine is a large, upright unit with a cylindrical tank and a long handle. The background shows a blurred living room with a sofa and a lamp.

Maintenance

Carpet Maintenance Guide



The Scandinavian Collection

Scandinavian Collection

The importance of Carpet Maintenance

Correct maintenance of carpet will not only extend the life of any carpet investment but will also help to preserve a satisfactory level of appearance and comfort within the working environment.

As part of a company's image, millions of pounds are spent on buildings and interior design concepts and poorly maintained carpets can adversely affect a facility's image, reduce product performance and accelerate the need for carpet replacement.

Interface recognises the need to maintain and extend the life of the carpet investment for environmental as well as financial reasons and offers a solution by providing a detailed carpet maintenance guide.

Interface can also offer training and supplemental support for the in-house maintenance team as well as more customised maintenance programmes tailored to a specific facility's needs.

Product Selection

Maintaining the carpet investment means more than choosing the correct cleaning methods. Selecting the right products – in terms of construction, design and colour – from the outset contributes greatly to its long term performance and appearance, for example:

Construction: A dense pile construction can help to minimise wear problems due to soil ingress.

Colour: As well as creating a distinctive image & statement the choice of colour can also serve a practical purpose. Colour plays an important role in determining soil hiding with, for example, mid to dark colours being better than light, bright colours or very dark colours.

Design: Patterned carpets are the most effective at soil hiding with random designs being particularly useful.

Taking these factors, and more, into consideration Interface has classified its products according to their soil hiding potential. This should help in product selection but it should be made clear that this does not remove the need for a proper maintenance programme on the product during use.

Our Account Managers, in conjunction with our Site Service experts, will work alongside you to try and assist in choosing the correct product for the areas in question and the correct maintenance programme for your facility's needs.

Identifying your **specific needs**

Just as interior areas are subject to different levels of use each of these areas will require an appropriate level of maintenance and care. For example, heavily trafficked areas such as entrance lobbies and corridors require effective daily vacuum cleaning whilst areas around vending machines and desks need daily attention to spills and stains.

The building layout, type of usage, traffic patterns, hours of operation, etc., all need to be assessed when developing a maintenance programme and the following guide provides detailed advice on approved maintenance techniques and solutions.

Routine care from the outset means a longer lasting product and improved long-term appearance and so the aim of the Interface maintenance guide is to maximise the life of your carpet and protect your investment.

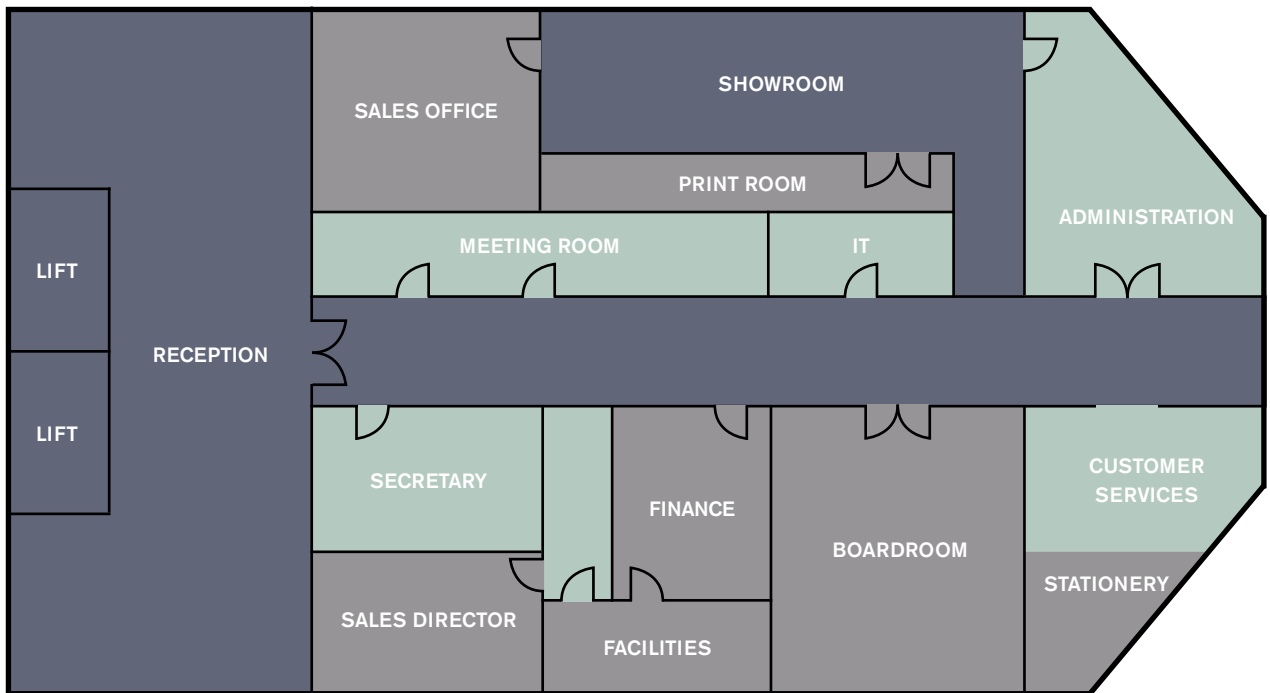




Planned maintenance

With a clear maintenance programme, like the one shown below, facility managers and cleaning contractors will know where to concentrate their efforts at a glance. In this way, routine, interim and periodic maintenance can be scheduled at appropriate intervals as part of the programme.

Example of maintenance programme



Daily Maintenance

- Areas to be vacuumed daily
- Daily spot and stain removal

Programmed Cleaning

- Three monthly clean of heavy traffic areas
- Six monthly clean of medium traffic areas
- Twelve monthly clean of light traffic areas

Preventative maintenance

Barrier Mats

Barrier mats are an integral part of any maintenance programme as they are designed to capture inbound soil at threshold points i.e. entrances.

This soil can be removed by vacuum cleaning so that it does not spread to other areas. Barrier mats should be cleaned daily and even replaced regularly to prevent the build up of soil as otherwise they become ineffective.

A minimum of 3-5 metres of barrier matting should be placed at the point of entry based on volume and level of traffic flow. Ideally this should be a combination of primary and secondary barrier systems.





Routine maintenance

It has been established that 80% of the soil, which can be deposited in a carpet, usually originates from outside the building, hence the provision of suitable barrier areas, for example Barricade or Foyer, at entrance points is the first line of defence against soiling.

However, carpets will still collect soil and so the following recommendations are designed to minimise the effects of soil on both the durability and appearance of your carpet.

The frequency of cleaning must be based on the specific needs of trafficked areas within your facility.

Vacuum Cleaning

An effective vacuum cleaning programme is essential for the success of any carpet maintenance plan. Grit and dirt if not vacuumed thoroughly can become an abradant that could damage fibres, if left in the carpet to build up. In addition to removing soil vacuum cleaning also enhances the appearance of the product by lifting and restoring the pile.

The use of proper equipment and techniques are critical to the success of any vacuum cleaning programme and heavy duty upright vacuums with a brushing action are recommended.

Carpet sweepers take up surface soil but do not remove soil which was worked down between the tufts. Therefore for thorough cleaning a vacuum cleaner which incorporates strong suction together with a revolving brush agitator or beater bar should be used. Height adjusters are fitted to most cleaners to allow efficient cleaning of carpets of varying constructions.

The frequency of vacuuming is determined by visual inspection but ideally should be carried out daily. Heavy traffic areas such as lobbies, entrances/exits and barrier mats - particularly those exposed to various weather conditions - may require more frequent vacuum cleaning and any maintenance programme should reflect that.

Vacuuming these areas more regularly will help prevent soil from being trafficked into other areas. In areas such as Conference and Boardrooms, vacuum cleaning can be carried out when necessary, though not less than once a week.

For thorough cleaning be sure movements are slow and methodical when vacuuming.

Note: For Superflor and any other needlepunched carpet with a pile or structure, a suction only vacuum cleaner should be used.

Routine maintenance

Pile Lifting

Should be used to precondition carpets for general cleaning. This is an effective method of lifting crushed pile and loosening dry soil. Heavily trafficked areas using a cut-pile product will particularly benefit from this being carried out on a weekly basis. Loop pile products require less intensity and can be pile lifted less frequently.

For best results apply the pile lifting machine against the direction of the pile.

Note: Pile lifting should not be carried out on Superflor or any other needlepunched carpet. Nor should it be carried out on Elevation III, The Scandinavian Collection, Straightforward or any other microtuft product.





Routine maintenance

Spot Cleaning

Localised stains caused by accidental spillage will occur. As part of the maintenance programme daily removal of spots and spills should be carried out to help maintain an acceptable appearance level between scheduled cleaning.

Immediate action should be taken when confronted with spots and spills where practically possible; this will reduce the probability of a permanent stain.

Endeavour to classify the stain – i.e. Water, Oil or a combination of both – as it is important to use those solutions and techniques which are appropriate for the specific type of stain to be treated.

When carrying out spot cleaning always remember:

DO

- Take immediate action where practically possible to avoid permanent staining
- Try to classify the stain.
- Use a clean white cloth and work from the outer edge towards the centre of the spill to prevent spreading.
- Remove excess moisture using absorbent cloths, towels etc and protect the cleaned area until the carpet is completely dry.

DO NOT

- Rub or agitate vigorously as this could distort or damage the pile and create lighter patches on the floorcovering.
- Over wet the carpet.

Treating water based stains

For liquid spills, blot up as much of the liquid as possible with a clean, white cloth. If the spill is semi-solid or has hardened, gently scrape it with a spoon or spatula and then blot the spot with a damp sponge.

Always work the outer edge of the spot towards the centre. Never rub across a wet spill in a manner that causes the stain or contamination to be spread from the original area.

After blotting water-based spots, promptly remove the remaining residue with a small amount of dry compound. Sprinkle the compound over the spot and use a hand brush to gently agitate the compound.

Allow the area to dry (about 15-30 minutes) and then brush the compound again. If the compound seems to stick to the carpet, gently brush the area again, and then vacuum. Repeat the application if necessary. Avoid aggressive brushing as this may damage the pile.

For difficult to remove coffee, tea, juice or soft drink stains, use a recommended stain remover after spot cleaning. Apply according to the instructions and leave to dry. Repeat if necessary. Contact your local technical team for more information on recommended stain removers.

Note: Some stain removers must not be used on products which contain wool or which are susceptible to bleaching.

Routine maintenance

Treating oil based stains

For the removal of oily stains such as paint, grease, tar, asphalt, etc, specific carpet spotters should be used.

Colourfastness should always be checked by applying the solution to an inconspicuous part of the carpet. Spray the spotter onto a clean, white cloth and press in onto the carpet.

Check for any dye transfer to the cloth. If colour transfer has occurred, then do not use the solution. Otherwise, apply the spotter sparingly to a clean, white cloth and press the cloth onto the stain.

Again, do not rub across the stain but wipe gently from the outer edge towards the centre of the stain. Repeat the procedure until the stain has been removed and after any chemical treatment, the spot should be flushed out with water to remove any excess. Protect the freshly clean area until the carpet is completely dry. Follow with an application of dry compound as explained in treating water based stain.

Note: Having a small extractor machine available can be easier to flush out any spill. Spotting of heavy spillages may not remove what is resting at the base of the pile. This can only be effectively removed by hot water extraction.

Removing Chewing Gum

To remove chewing gum, spray type removers are recommended. Lightly spray chewing gum remover onto the affected area allowing the product to freeze the gum. Then use a blunt object to gently scrape off.

Care should be taken not to damage the surface by using excess force or a sharp object.

Any frozen particles should be removed as soon as possible either by gentle brushing or vacuum cleaning.





Interim Maintenance

Dry Extraction

This cleaning method is easy to use and relatively non-disruptive, as areas can be used almost immediately after cleaning. Another benefit of this method is that it doesn't leave any sticky detergent residue that can re-attract soiling.

Firstly, thoroughly pile lift or vacuum clean the carpet and pre-spray with a suitable traffic lane cleaner. Then spread the dry compound onto the carpet and gently brush. Allow to dry for 30 minutes before vacuuming the particulate and soil from the carpet.

Note 1: For Superflor or other needlepunched products vacuuming and hot water extraction are the only recommended procedures.

Note 2: Dry extraction is not suitable for Elevation III, The Scandinavian Collection, Straightforward or any other microtuft product.

Encapsulation

The encapsulation method is a recent addition to the carpet cleaning possibilities. This periodical cleaning method combines outstanding results with reduced inconvenience to the workforce.

Encapsulation cleaning is quick and easy. First, a solution with 'crystals' is sprayed onto the floor and brushed into the carpet. The crystals encapsulate the dirt. The solution evaporates quickly, after which the crystals are easily removed during daily vacuuming.

The main benefits of encapsulation are the reduced water usage (90% less compared to water extraction) and short drying time (10 minutes).

Note: Encapsulation solutions are available for spot cleaning as well as periodic maintenance.

Interim Maintenance

Bonnet Cleaning

The hot water extraction method is generally most desirable; however the bonnet cleaning method may occasionally be needed as a supplement to allow the earlier introduction of traffic.

As with all other maintenance methods, always prepare the carpet by vacuuming or pile lifting, then apply a bonnet cleaner.

Before drying begins, agitate the area utilising a low speed (175 rpm maximum) rotary floor machine to which a 100% cotton bonnet has been attached.

Be extremely careful to cover the area thoroughly so that the carpet pile has the opportunity to be agitated in several directions to loosen attached soil and other contaminants.

After approx. 15m² turn the bonnet over and clean the same area if necessary. As the area is covered, soil and contaminants will accumulate in the bonnet, which should be rinsed with specific solutions, before proceeding. After the area has dried completely, the carpet should be vacuum cleaned or pile lifted.

Note 1: The bonnet should be frequently checked for cleanliness as, once soiled, it will need to be replaced before proceeding.

Note 2: Care should be taken when using this method, especially on cut-pile carpets, as improper treatment can damage the yarn and fibre.





Periodic Maintenance

Hot water extraction

Despite regular vacuum and spot cleaning the carpets appearance will in time become dulled due to an accumulation of dirt and stains that regular cleaning cannot remove. It then becomes necessary to wet clean the carpet.

Interface recommends that carpets are deep cleaned periodically using the hot water extraction process. This method is effective in removing soil and residue from carpeting. It works by injecting water and cleaning agents into the carpet and suspending the dirt in the solution which is then removed by a built-in vacuum system.

Always prepare the carpet by spot cleaning and thorough vacuum cleaning prior to hot water extraction. The method uses a hot water extraction machine filled with extraction liquid diluted according to the manufacturer's instructions.

The recommended technique is to operate the floor wand or self-contained extractor by engaging the valve or button which releases the cleaning solution, and pulling or pushing the equipment for approximately 1 to 2 metres (or at a comfortable distance). The solution valve should be released before reaching the end of the pass to ensure that all of the solution is vacuumed up.

The same area should be crossed two or three times again with the solution valve off to remove as much moisture from the carpet as possible. To continue to clean the floor, overlap approximately 5 cms into the area already cleaned and proceed as described above. In extremely soiled areas it may be necessary to make two or three additional passes with the solution valve on. Then make several additional passes with the solution valve off to remove as much moisture from the area as possible, always being careful not to over-wet the carpet.

To reduce drying times, fans may be placed on wet areas during cleaning. The carpet should be left and allowed to dry for as long as possible before use, and the procedure should be finished with a thorough pile lifting.

DO NOT

- Allow water temperatures to exceed 50°C (120°F) on the carpet.
- Allow foot traffic on the carpet until it is completely dry as it can cause fibre damage and rapid re-soiling.

Note: For Superflor and other needlepunched products, hot water extraction and vacuum cleaning are the only recommended maintenance methods.

Floorcare **Solutions**

Some commercial carpet cleaning solutions are very harsh and can damage both the surface pile of the carpet and the backings. It is therefore important to select solutions that meet the basic standards outlined here and to evaluate each product before using it.

Interface modular flooring may be maintained using a number of widely recognised and readily available carpet cleaning agents.

Generally:

- Products with pH levels over 9.5 or which contain toxic, odorous or flammable solvents should be avoided.
- Products designed for use in hot water extraction equipment should not contain oil-based defoamers (based defoamers can leave oily residues causing rapid re-soiling).
- No product should include optical brighteners (optical brighteners can adversely affect the colouration of the carpet).
- All cleaning solutions should be tested for sticky residues that may cause re-soiling. To test a solution, a small amount of concentrated detergent/cleaning solution should be poured into a small, clean glass dish. Allow the solution to air dry completely (24 hours minimum). Break up any hard residue on the surface of the glass dish and examine it. If the residue can be characterised as dry powder, dry flakes or dry crystals, the solution is acceptable. If the residue appears oily, greasy, sticky or in waxy flakes, the solution is not acceptable since it would be likely to contribute to rapid re-soiling.
- Spotting solutions should be used as required and should always be flushed out with clean water after the spot has been treated.

Cleaning Solution Specifications

- Maximum pH 9.5 in dilution preferred.
- Solvents at a maximum of 10% by volume.
- No optical brighteners.



Interface®

Miscellaneous **Maintenance**

Carpet tile replacement

Carpet tiles that have become badly stained or damaged can be replaced from attic/spare stock.

A damaged tile can be removed by slipping a knife edge under one corner and peeling it from the floor, if they have been installed using traditional glues or tackifiers. If they have been installed using TacTiles, simply lift a corner of the tile. To learn more about TacTiles, our sustainable installation system, please refer to our installation guide or contact your nearest sales centre.

When damaged carpet tiles are being replaced, care should be taken to ensure that the face pile of the surrounding tiles is brushed upright and that the replacement tile is fitted carefully to prevent pile fibres from becoming trapped between joints.

Carpet tiles taken from attic/spare stock are likely to have a newer appearance than the ones being replaced. If Interface random designs are used, the recommended installation method is non-directional and old and new tiles are more likely to visually integrate completely into the floor design.

In other ranges, any new tiles can be noticeable. If this is the case the new tiles should be installed in less visible areas. Any flooring product should follow Interface's recommended installation instructions.

Access floors

The relevant access floor manufacturer should be contacted for recommendations for carpet cleaning in relation to the methods and techniques recommended in this guide. Low-moisture methods and techniques are generally preferred.

Note: Please refer to our Installation Guide for best practices when installing carpet tiles.

Contact

For further information please contact the Technical Department on (+44) 01274 690690 or visit:

www.interface.com

Europe, Middle East & Africa

AE	+971 (0)4 8189077
AT	+41 44 913 68 00
BA	+387 33 522 534
BE	+32 2 475 27 27
BG	+359 2 808 303
BY	+375 17 226 75 14
CH	+41 44 913 68 00
CZ	+42 0 233 087 111
DE	+49 2151 3718 0
DK	+45 33 79 70 55
ES	+34 932 418 750
FR	+33 1 58 10 20 20
HR	+385 14 62 30 63
HU	+36 1 349 6545
IE	+353 1 679 8466
IL	+972 546602102
IT	+39 02 890 93678
KZ	+7 495 234 57 27
NL	+31 33 277 5555
ME	+381 11 414 92 00
MK	+389 2 323 01 89
NO	+47 23 12 01 70
PL	+48 500 151 101
PT	+351 217 122 740
RO	+40 21 317 12 40/42/43/44
RS	+381 11 414 92 00
RU	+7 495 234 57 27
SA	+966 500615423
SE	08-241 230
SK	+421 911 104 073
SI	+386 1 520 0500 +386 8 20 54 007
TR	+90 212 365 5506
UA	+38(044)238 27 67
UK	+44 (0)1274 698503
ZA	+27 11 6083324

www.interface.com



Mission Zero:
our promise to eliminate any
negative impact our company
may have on the environment
by the year 2020.



8. Spares Information

Two boxes of spares left on site
Contact Supplier for additional tiles





9. Guarantees and Warranties

12 months





10. Replacement Strategy

Refer back to Supplier





11. Demolition Decommissioning or Disposal

All waste can be disposed of in general waste skip

