



I 3.1 AS-BUILT DRAWINGS

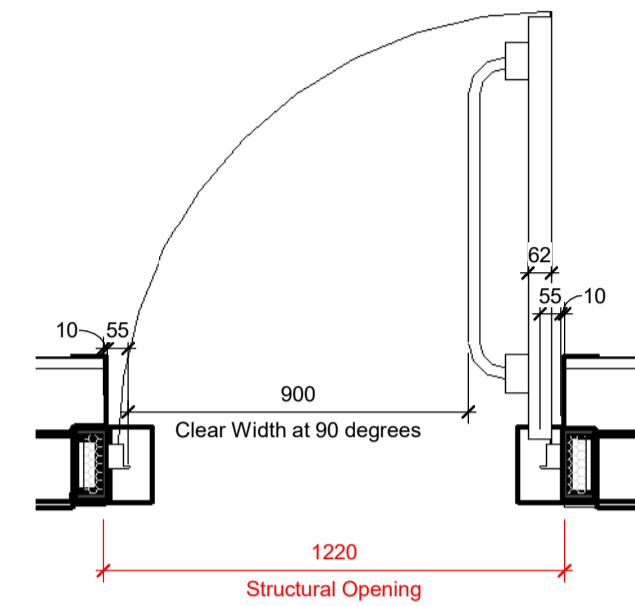
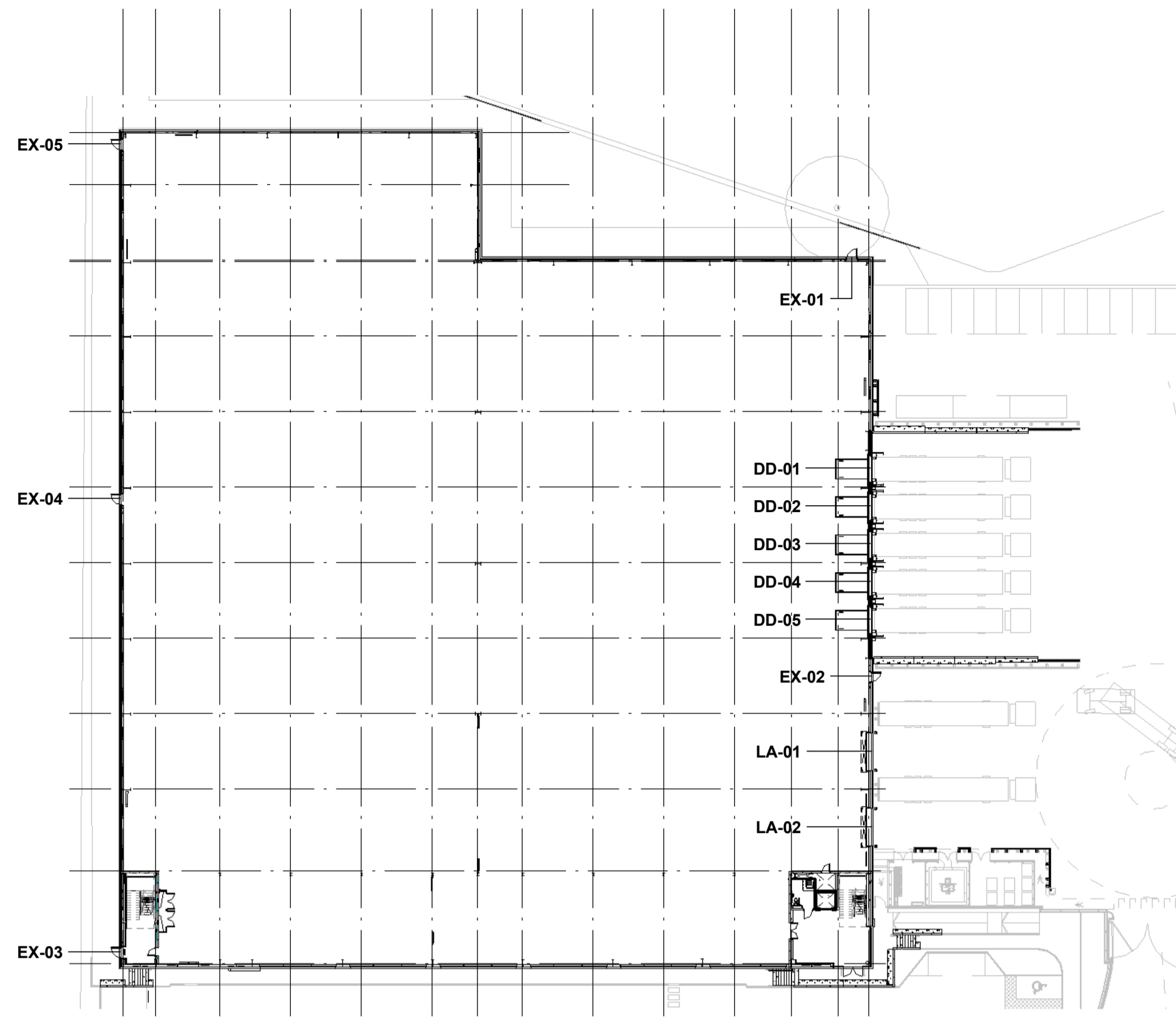
Please note that all drawings below are hyperlinked to the drawings listed in the below register. Please click on the drawing title to go directly to the drawing you wish to view.

Drawing Register: UMC Architects

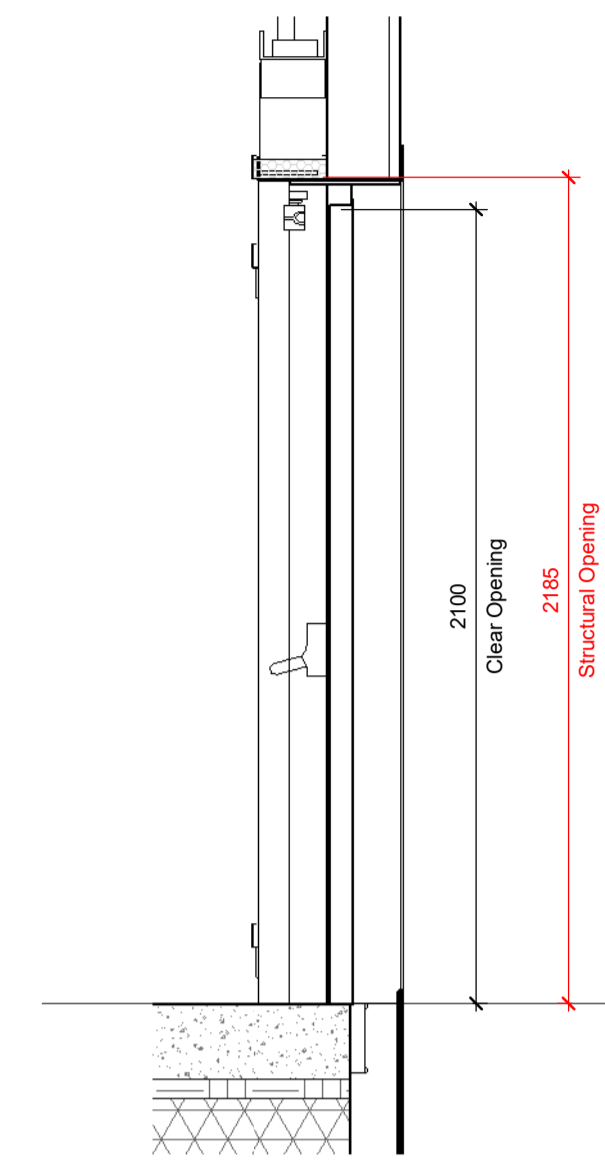
FINISHES SCHEDULE

DRAWING NUMBER	DRAWING TITLE	REV
P23025-UMC-BR-XX-SC-A-1501	External Door Schedule	CR1
P23025-UMC-BR-XX-SC-A-1502	External Window Schedule	CR1
P23025-UMC-BR-XX-SC-A-1505	Internal Door Schedule	CR1
P23025-UMC-BR-ZZ-DR-A-1206	Office Finishes	CR1
P23025-UMC-BR-ZZ-DR-A-1208	Office Floor Finishes	CR1
P23025-UMC-BR-ZZ-DR-A-1209	Office Wall Finishes	CR1
P23025-UMC-EX-00-DR-A-0703	External Finishes	CR1

- Dimensions are all in millimeters, unless stated otherwise.
 - It is the recipient's responsibility to print this document to the correct scale.
 - All the relevant drawings and specifications should be read in conjunction with this drawing.
 - Scaling of this drawing is not recommended.



Typical External Door Plan
1 : 20



Typical Door Head Section
1 : 20

- NOTE:**
- For full door details refer to the Hormann drawings:
- Dock leveller doors
P23025-HOR-ZZ-00-DR-X-0001
 - Level access doors
P23025-HOR-ZZ-00-DR-X-0002
 - Single Leaf Doorset
P23025-HOR-ZZ-00-DR-X-0003

External Door Schedule Layout Key
1 : 500

**FOR DOOR DETAILS REFER TO HORMANN DOORS
LATEST CONSTRUCTION RECORD/ AS-BUILT
DRAWINGS**

External Door Schedule														
Mark	Manufacturer	Construction				Ironmongery							Signage	
		Clear Opening (mm)		Structural Opening (mm)		Fire Rating	U-Value	Colour	Handles	Latch	Hinges	Comment	Directional Arrow / Running Man	Fire Door Keep Shut (Both Sides Of Door).
Height	Width (90 degrees)	Height	Width											
EX-01	Hormann	2100	900	2185	1220	None	1.6	RAL 9002 - Hamlet	Hormann doors single point panic bar internally	Flush fittings to be in to panic hardware	Standard Hinge - 2no per leaf	Friction stays	Yes	Yes
EX-02	Hormann	2100	900	2185	1220	None	1.6	RAL 7016 - Anthracite	Hormann doors single point panic bar internally	Flush fittings to be in to panic hardware	Standard Hinge - 2no per leaf	Friction stays	Yes	Yes
EX-03	Hormann	2100	900	2185	1220	None	1.6	RAL 9002 - Hamlet	Hormann doors single point panic bar internally	Flush fittings to be in to panic hardware	Standard Hinge - 2no per leaf	Friction stays	Yes	Yes
EX-04	Hormann	2100	900	2185	1220	None	1.6	RAL 7016 - Anthracite	Hormann doors single point panic bar internally	Flush fittings to be in to panic hardware	Standard Hinge - 2no per leaf	Friction stays	Yes	Yes
EX-05	Hormann	2100	900	2185	1220	None	1.6	RAL 9002 - Hamlet	Hormann doors single point panic bar internally	Flush fittings to be in to panic hardware	Standard Hinge - 2no per leaf	Friction stays	Yes	Yes

Dock Door Schedule								
Mark	Manufacturer	Clear Opening (mm)		Vision Panel	U-Value	Fire Rating	Door Finish	Description
		Height	Width					
DD-01	Hormann	3000	3000	2No. acrylic double glazed vision panels within 3rd door section	1.3	None	Finish: Polyester powder coated Colour: Ext Silver (RAL 9006) Int: Off White (RAL 9002)	Hormann or similar SPU F42 WA300 electrically operated insulated sectional vertical lift door with low level springs complete with sliding bolts electrically interlocked and anti-fall devices
DD-02	Hormann	3000	3000	2No. acrylic double glazed vision panels within 3rd door section	1.3	None	Finish: Polyester powder coated Colour: Ext Silver (RAL 9006) Int: Off White (RAL 9002)	Hormann or similar SPU F42 WA300 electrically operated insulated sectional vertical lift door with low level springs complete with sliding bolts electrically interlocked and anti-fall devices
DD-03	Hormann	3000	3000	2No. acrylic double glazed vision panels within 3rd door section	1.3	None	Finish: Polyester powder coated Colour: Ext Silver (RAL 9006) Int: Off White (RAL 9002)	Hormann or similar SPU F42 WA300 electrically operated insulated sectional vertical lift door with low level springs complete with sliding bolts electrically interlocked and anti-fall devices
DD-04	Hormann	3000	3000	2No. acrylic double glazed vision panels within 3rd door section	1.3	None	Finish: Polyester powder coated Colour: Ext Silver (RAL 9006) Int: Off White (RAL 9002)	Hormann or similar SPU F42 WA300 electrically operated insulated sectional vertical lift door with low level springs complete with sliding bolts electrically interlocked and anti-fall devices
DD-05	Hormann	3000	3000	2No. acrylic double glazed vision panels within 3rd door section	1.3	None	Finish: Polyester powder coated Colour: Ext Silver (RAL 9006) Int: Off White (RAL 9002)	Hormann or similar SPU F42 WA300 electrically operated insulated sectional vertical lift door with low level springs complete with sliding bolts electrically interlocked and anti-fall devices

Level Access Door Schedule													
Mark	Manufacturer	Clear Opening (mm)		Structural Opening (mm)		Insulation Tolerance (mm)			Vision Panel	U-Value	Fire Rating Text	Finish	Description
		Height	Width	Height	Width	Head	Jamb LHS	Jamb RHS					
LA-01	Hormann	4800	4000	4875	4140	70	70	70	3no Rectangular Panels, in 3rd panel up	1.1	None	Finish: Polyester powder coated Colour: Ext Silver (RAL 9006) Int: Off White (RAL 9002)	Hormann or similar SPU F42 A445 electrically operated insulated sectional overhead door with manual override. Standard lift doors with low level springs complete with sliding bolts electrically interlocked and anti-fall devices .
LA-02	Hormann	4800	4000	4875	4140	70	70	70	3no Rectangular Panels, in 3rd panel up	1.1	None	Finish: Polyester powder coated Colour: Ext Silver (RAL 9006) Int: Off White (RAL 9002)	Hormann or similar SPU F42 A445 electrically operated insulated sectional overhead door with manual override. Standard lift doors with low level springs complete with sliding bolts electrically interlocked and anti-fall devices .

CR1	Construction Record Issue	LK	SW	27.08.24
C02	Amended to reflect Hormann comments received 23.02.24.	SW	LK	23.02.24
C01	External door insulation to be inside of PFC. Clear height of 2100mm and clear width of 900mm at 90 degrees as agreed with Hormann, structural openings have been added to schedule. Door references added and door details included for. Clear opening updated to align to Hormann on dock door schedule and insulation tolerance removed. On the level access door schedule the structural opening has been added to include for insulation tolerances.	LK	SW	14.02.24
P01	Preliminary Issue	SW	LK	24.11.23
rev	amendments	by	ckd	date

Horton Road, Poyle
External Door Schedule

Information Container LOIN	
LOD 4	LOI 2

PANATTONI

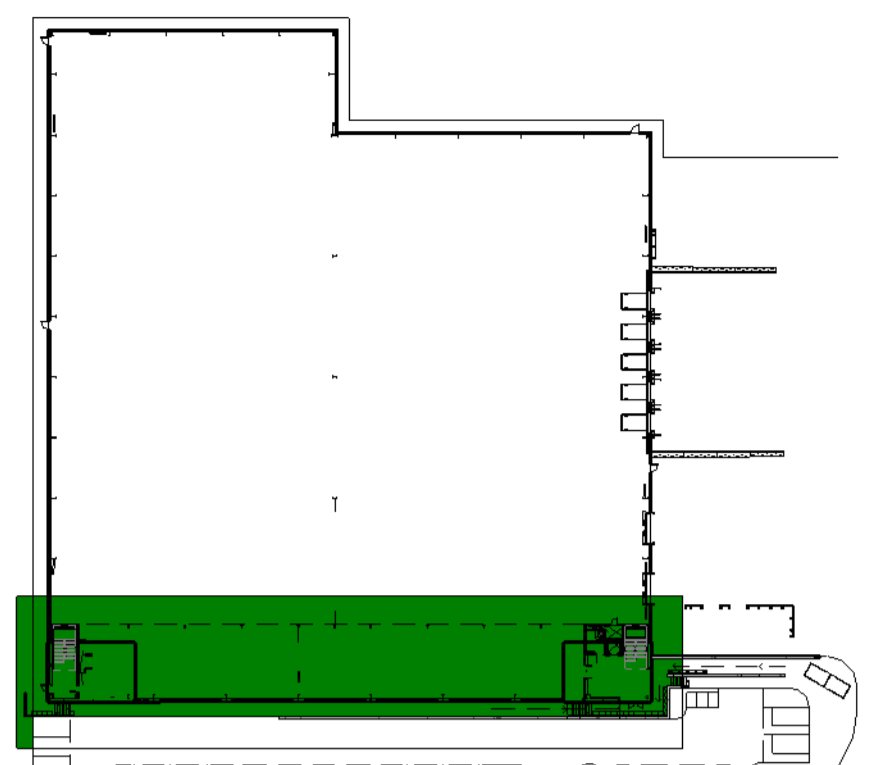
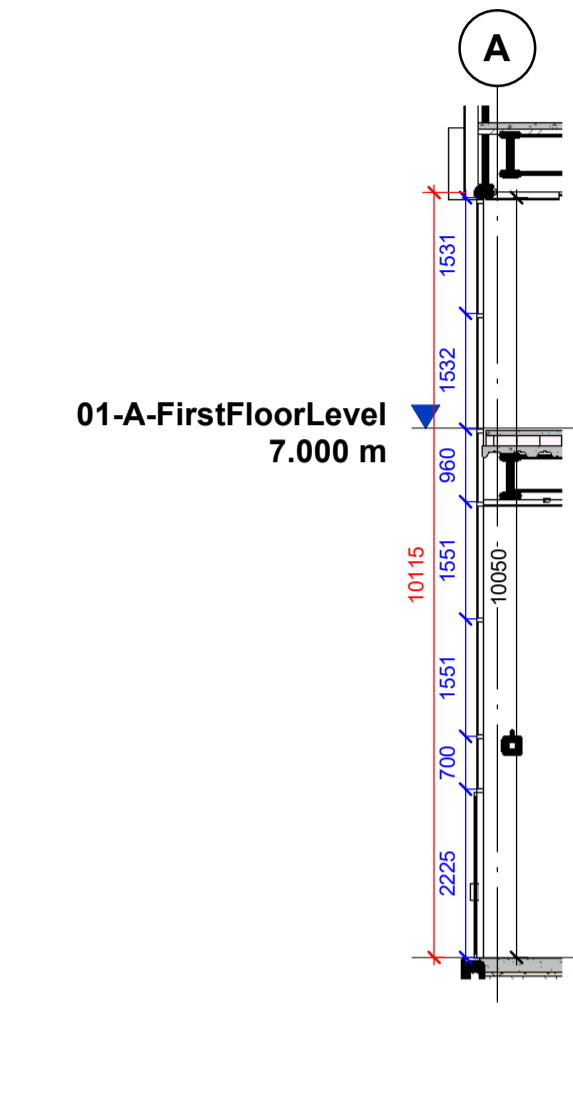
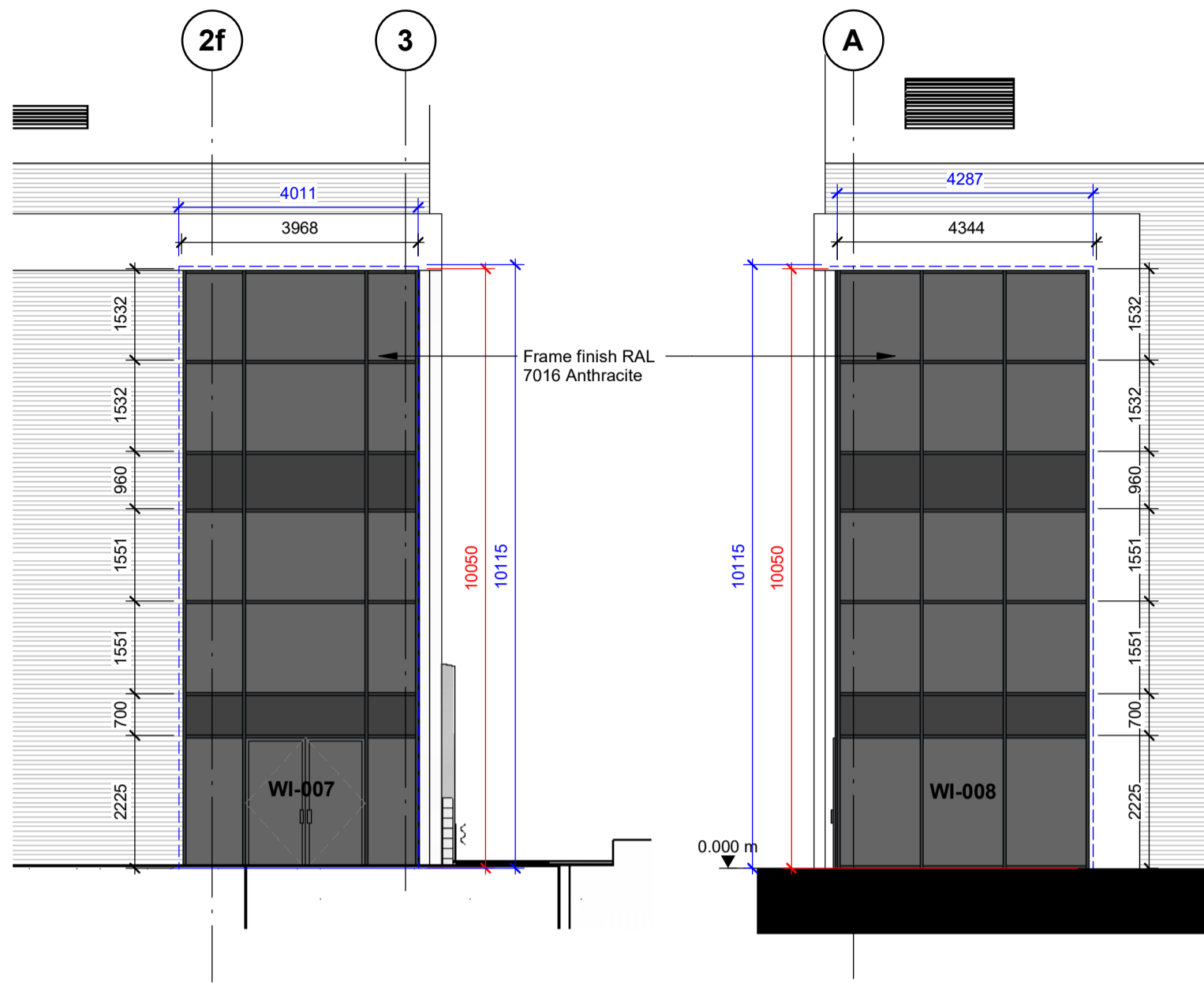
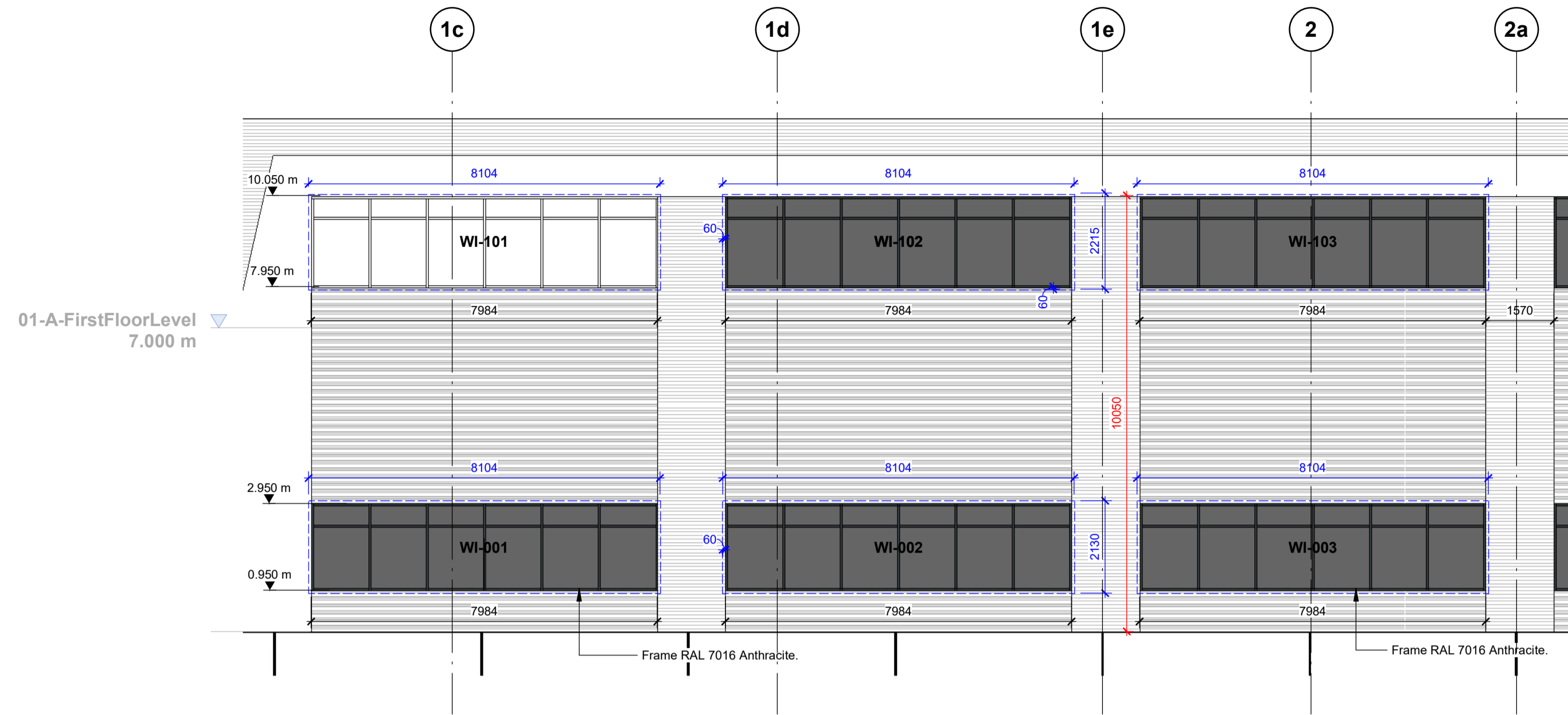


Newark Beacon, Cafferata Way, Newark, Nottinghamshire, NG24 2TN
 +44 (0)1636 653027 +44 (0)1636 653010 info@umcarchitects.com

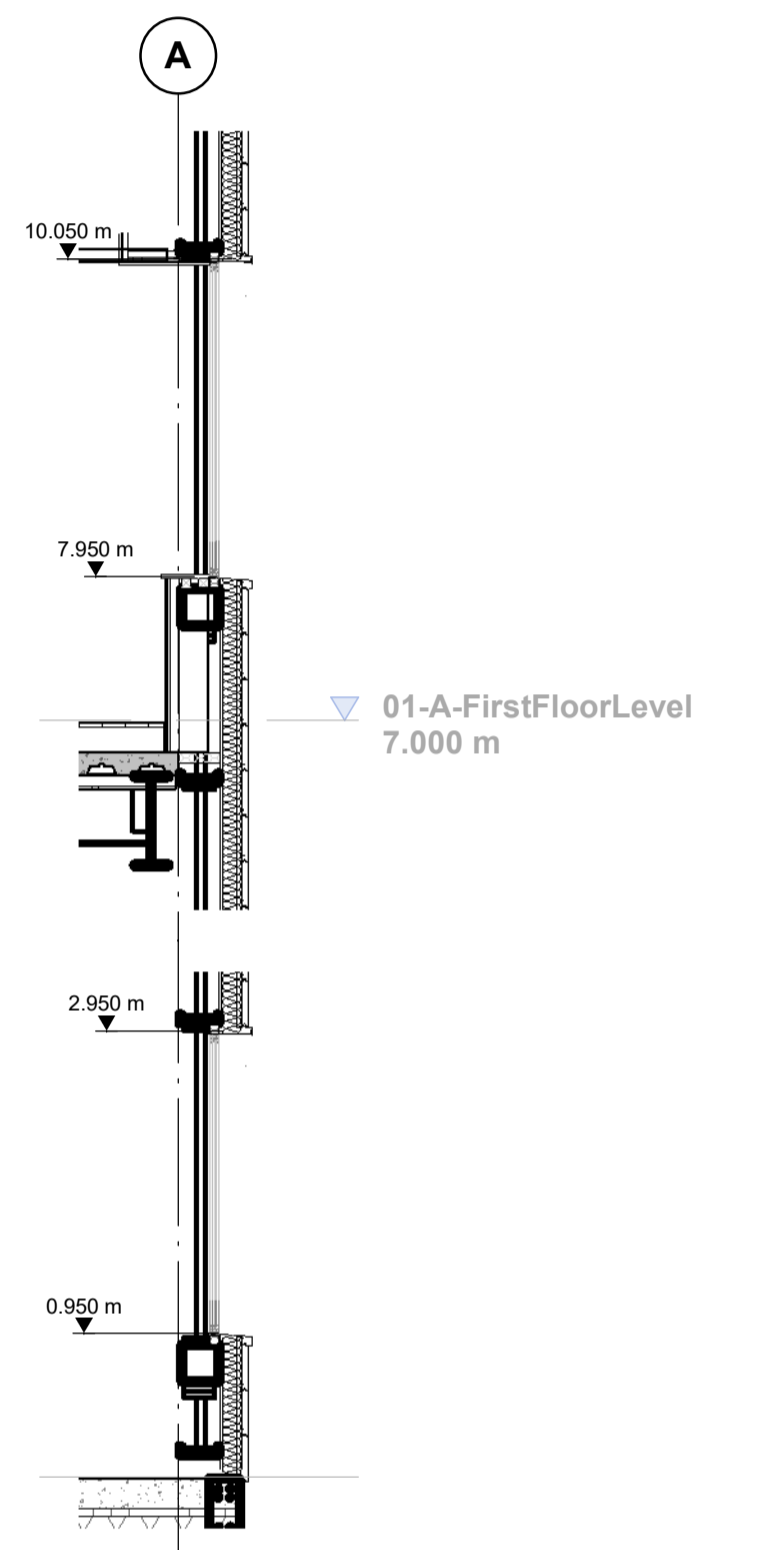
RIBA PoW Stage:	Stage 4 - Detailed Design
Suitability / Status:	CR
Drawn / Checked:	SW/LK
Date:	07/03/23
Scale:	As indicated @ A1
UMC Project Number:	22400
Document Reference:	Drawing no: P23025_UMC_BR_XX_SC_A_1501
Revision:	CR1

FINAL ISSUE
THIS DRAWING IS TO BE USED FOR THE STATED PURPOSE ONLY AND SHOULD NOT BE USED FOR ANY OTHER

- Dimensions are all in millimeters, unless stated otherwise.
 - It is the recipient's responsibility to print this document to the correct scale.
 - All the relevant drawings and specifications should be read in conjunction with this drawing.
 - Scaling of this drawing is not recommended.



Key Plan
1 : 1000



Office Window Section
1 : 50

CR1	Construction Record Issue	LK	SW	27.08.24
C01	Structural openings amended to allow for 60mm jamb, head and sill insulation tolerance. Windows WI-001, WI-006, WI-101 & WI-106 are now 7984mm cladded opening as per Ardent request. Cladding bands either side have been pulled in 35mm. Head and sill section added for clarity.	SW	LK	22.02.24
P01	Preliminary Issue	SW	LK	24.11.23
rev	amendments	by	ckd	date

Horton Road, Poyle
External Window Schedule

Information Container LOIN
 LOD 4 | LOI 2

PANATTONI

umc architects

Newark Beacon, Caferata Way, Newark, Nottinghamshire, NG24 2TN
 +44 (0)1636 653027 | +44 (0)1636 653010 | info@umcarcitects.com

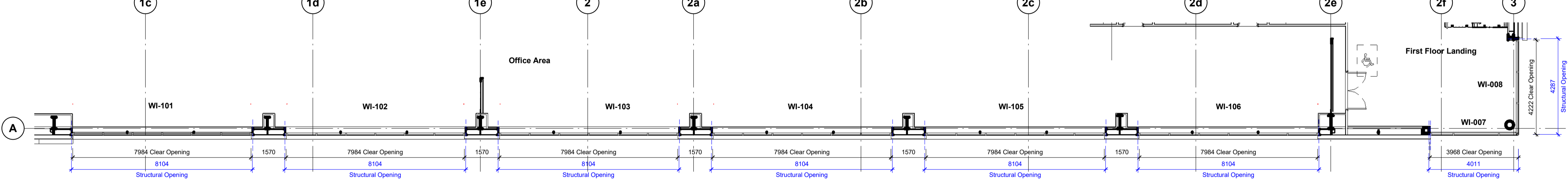
RIBA PoW Stage: Stage 4 - Detailed Design
 Suitability / Status: CR
 Drawn / Checked: SW/LK
 Date: 07/03/23
 Scale: As indicated @ A1
 UMC Project Number: 22400
 Document Reference: P23025_UMC_BR_XX_SC_A_1502
 Drawing no: 1502
 Revision: CR1

South East Elevation
1 : 100

North East Elevation
1 : 100

Curtain Wall Section
1 : 100

Ground Floor - Glazing Schedule
1 : 100



First Floor - Glazing Schedule
1 : 100

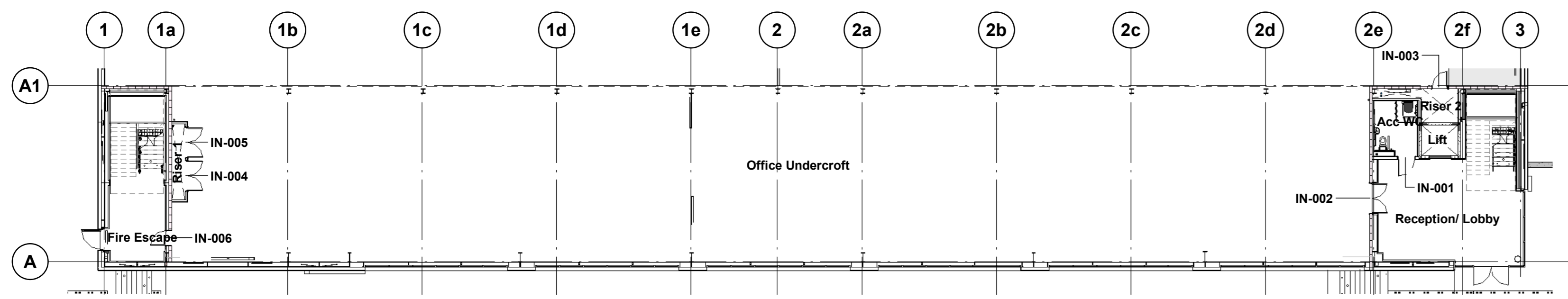
Glazing Schedule							Comments
Mark	Cladded Opening (mm)		Jamb, Head, Sill Insulation Tolerance (mm)	Frame Material	Frame Finish	Glazing Colour	
	Height	Width					
00-A-GroundFloorLevel							
WI-001	2000	7984	60	Aluminium	PPC RAL 7016, 30% Gloss	Grey Tint	Schuco, APA, or Senior Architectural Systems SF52 curtain walling system to be provided with factory sealed double glazed units with glazed and insulated spandrel panels, where necessary.
WI-002	2000	7984	60	Aluminium	PPC RAL 7016, 30% Gloss	Grey Tint	Schuco, APA, or Senior Architectural Systems SF52 curtain walling system to be provided with factory sealed double glazed units with glazed and insulated spandrel panels, where necessary.
WI-003	2000	7984	60	Aluminium	PPC RAL 7016, 30% Gloss	Grey Tint	Schuco, APA, or Senior Architectural Systems SF52 curtain walling system to be provided with factory sealed double glazed units with glazed and insulated spandrel panels, where necessary.
WI-004	2000	7984	60	Aluminium	PPC RAL 7016, 30% Gloss	Grey Tint	Schuco, APA, or Senior Architectural Systems SF52 curtain walling system to be provided with factory sealed double glazed units with glazed and insulated spandrel panels, where necessary.
WI-005	2000	7984	60	Aluminium	PPC RAL 7016, 30% Gloss	Grey Tint	Schuco, APA, or Senior Architectural Systems SF52 curtain walling system to be provided with factory sealed double glazed units with glazed and insulated spandrel panels, where necessary.
WI-006	2000	7984	60	Aluminium	PPC RAL 7016, 30% Gloss	Grey Tint	Schuco, APA, or Senior Architectural Systems SF52 curtain walling system to be provided with factory sealed double glazed units with glazed and insulated spandrel panels, where necessary.
WI-007	10050	3946	60	Aluminium	PPC RAL 7016, 30% Gloss	Grey Tint	Schuco, APA, or Senior Architectural Systems SF52 curtain walling system to be provided with factory sealed double glazed units with glazed and insulated spandrel panels, where necessary.
WI-008	10050	4222	60	Aluminium	PPC RAL 7016, 30% Gloss	Grey Tint	Schuco, APA, or Senior Architectural Systems SF52 curtain walling system to be provided with factory sealed double glazed units with glazed and insulated spandrel panels, where necessary.
01-A-FirstFloorLevel							
WI-101	2100	7984	60	Aluminium	PPC RAL 7016, 30% Gloss	Grey Tint	Schuco, APA, or Senior Architectural Systems SF52 curtain walling system to be provided with factory sealed double glazed units with glazed and insulated spandrel panels, where necessary.
WI-102	2100	7984	60	Aluminium	PPC RAL 7016, 30% Gloss	Grey Tint	Schuco, APA, or Senior Architectural Systems SF52 curtain walling system to be provided with factory sealed double glazed units with glazed and insulated spandrel panels, where necessary.
WI-103	2100	7984	60	Aluminium	PPC RAL 7016, 30% Gloss	Grey Tint	Schuco, APA, or Senior Architectural Systems SF52 curtain walling system to be provided with factory sealed double glazed units with glazed and insulated spandrel panels, where necessary.
WI-104	2100	7984	60	Aluminium	PPC RAL 7016, 30% Gloss	Grey Tint	Schuco, APA, or Senior Architectural Systems SF52 curtain walling system to be provided with factory sealed double glazed units with glazed and insulated spandrel panels, where necessary.
WI-105	2100	7984	60	Aluminium	PPC RAL 7016, 30% Gloss	Grey Tint	Schuco, APA, or Senior Architectural Systems SF52 curtain walling system to be provided with factory sealed double glazed units with glazed and insulated spandrel panels, where necessary.
WI-106	2100	7984	60	Aluminium	PPC RAL 7016, 30% Gloss	Grey Tint	Schuco, APA, or Senior Architectural Systems SF52 curtain walling system to be provided with factory sealed double glazed units with glazed and insulated spandrel panels, where necessary.

FOR DOOR DETAILS REFER TO ARDENT LATEST CONSTRUCTION RECORD/ AS-BUILT DRAWINGS

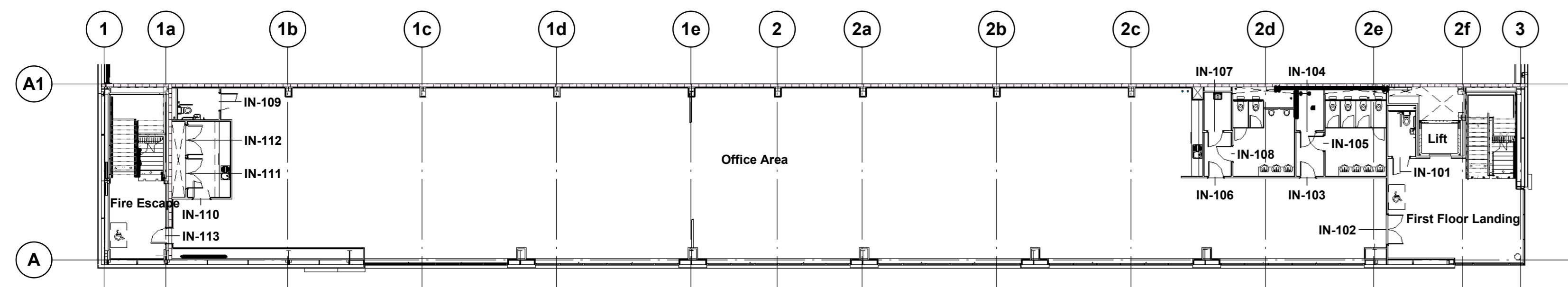
NOTE:
For further details please refer to specification.

1m | SCALE 1:50
 1m | SCALE 1:100
 10m | SCALE 1:1000

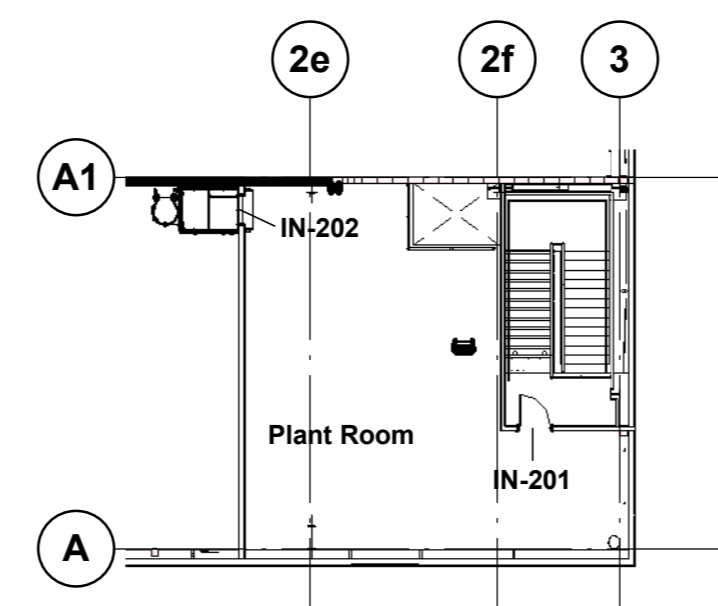
FINAL ISSUE
THIS DRAWING IS TO BE USED FOR THE STATED PURPOSE ONLY AND SHOULD NOT BE USED FOR ANY OTHER



Ground Floor Office Plan
1 : 200

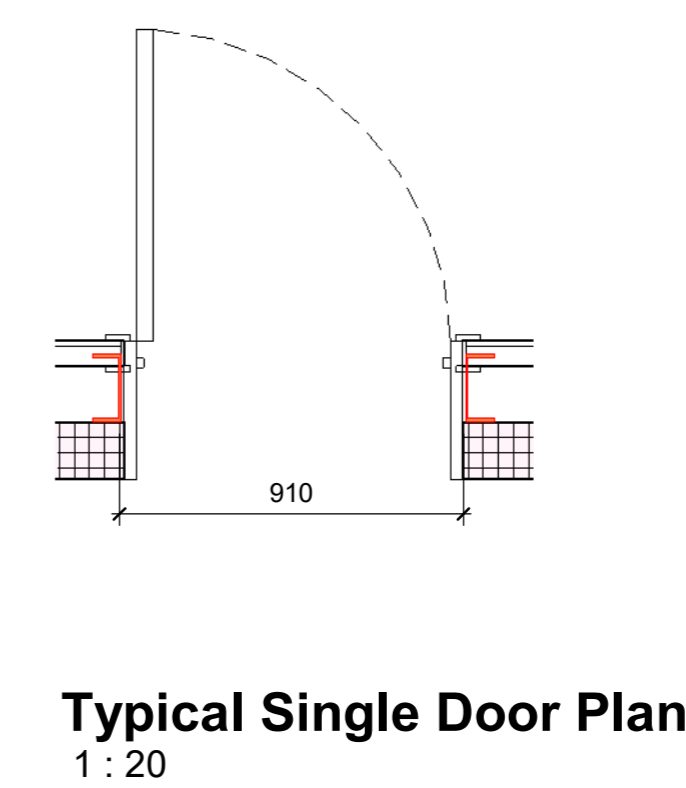


First Floor Office Plan
1 : 200

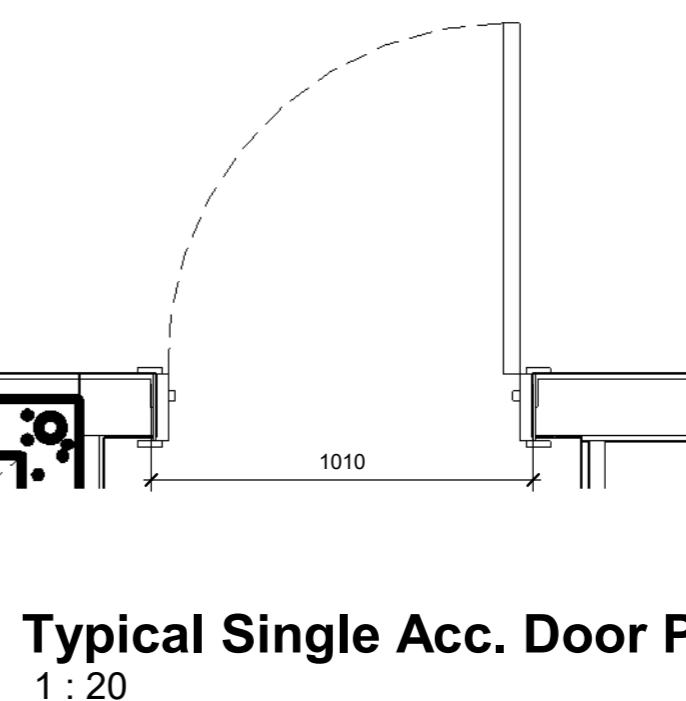


Plant Deck Plan
1 : 200

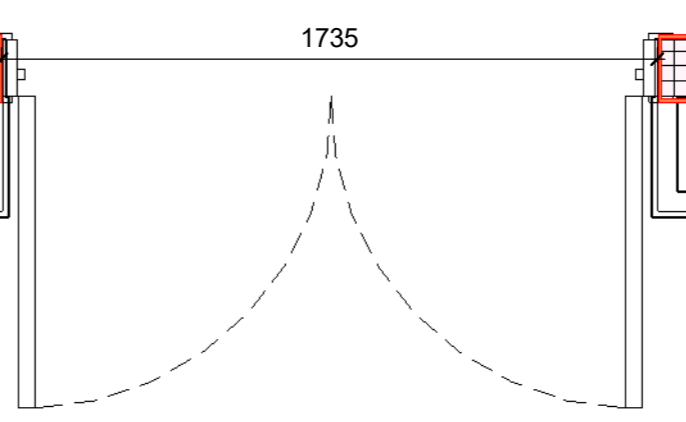
Mark	Door Type	Frame Opening Width	Frame Opening Height	Construction				Ironmongery				Signage				Fire Door Keep Locked	Fire Door Keep Shut (Both Sides Of Door)	
				Fire Rating	Finish	Vision Panel	Handles	Lock / Latch	Closer	Kick Plate	Hinges	Door Stop	Disabled pictogram	Female W.C.	Male W.C.			Unisex W.C.
00-A-GroundFloorLevel																		
IN-001	6	1010	2100	n/a	Timber veneered, non-tropical American Light Oak or equal approved	None	Lift to lock handle with external indicator	None	None	250mm tall S/S Kickplate to both sides of door	1 1/2 pairs heavy duty Grade 316 stainless steel butt hinges	Rubber buffer door stops -Rubber stop inside aluminium holder	Yes	No	No	No	No	No
IN-002	4	1735	2100	60 Minutes	Timber veneered, non-tropical American Light Oak or equal approved	150 x 750mm vision panel to main leaf only. Glazing to be fire rated to achieve requirements	Grade 316 stainless steel tubular pull handle with Grade 316 stainless steel push plate	None	Grade 316 stainless steel Heavy-duty overhead closer	150mm tall S/S Kickplate to both sides of door	3no. pairs heavy duty Grade 316 stainless steel butt hinges	Rubber buffer door stops -Rubber stop inside aluminium holder	No	No	No	No	Yes	No
IN-003	3	910	2100	60 Minutes	Timber veneered, non-tropical American Light Oak or equal approved	None	Grade 316 stainless steel tubular pull handle with Grade 316 stainless steel push plate	Mortice lock with internal thumb-turn override	Grade 316 stainless steel Heavy-duty overhead closer	150mm tall S/S Kickplate to both sides of door	1 1/2 pairs heavy duty Grade 316 stainless steel butt hinges	Rubber buffer door stops -Rubber stop inside aluminium holder	No	No	No	No	No	Yes
IN-004	5	1735	2100	30 Minutes	Timber veneered, non-tropical American Light Oak or equal approved	None	Grade 316 stainless steel tubular pull handle with Grade 316 stainless steel push plate	Mortice lock with internal thumb-turn override	Grade 316 stainless steel Heavy-duty overhead closer	150mm tall S/S Kickplate to both sides of door	3no. pairs heavy duty Grade 316 stainless steel butt hinges	Rubber buffer door stops -Rubber stop inside aluminium holder	No	No	No	No	No	Yes
IN-005	5	1735	2100	30 Minutes	Timber veneered, non-tropical American Light Oak or equal approved	None	Grade 316 stainless steel tubular pull handle with Grade 316 stainless steel push plate	Mortice lock with internal thumb-turn override	Grade 316 stainless steel Heavy-duty overhead closer	150mm tall S/S Kickplate to both sides of door	3no. pairs heavy duty Grade 316 stainless steel butt hinges	Rubber buffer door stops -Rubber stop inside aluminium holder	No	No	No	No	No	Yes
IN-006	2	910	2100	60 Minutes	Timber veneered, non-tropical American Light Oak or equal approved	150 x 750mm vision panel to main leaf only. Glazing to be fire rated to achieve requirements	Grade 316 stainless steel tubular pull handle with Grade 316 stainless steel push plate	None	Grade 316 stainless steel Heavy-duty overhead closer	150mm tall S/S Kickplate to both sides of door	1 1/2 pairs heavy duty Grade 316 stainless steel butt hinges	Rubber buffer door stops -Rubber stop inside aluminium holder	No	No	No	No	Yes	Yes
IN-203		910	2170								1 1/2 pairs heavy duty Grade 316 stainless steel butt hinges							
01-A-FirstFloorLevel																		
IN-101	6	1010	2100	n/a	Timber veneered, non-tropical American Light Oak or equal approved	None	Lift to lock handle with external indicator	None	None	250mm tall S/S Kickplate to both sides of door	1 1/2 pairs heavy duty Grade 316 stainless steel butt hinges	Rubber buffer door stops -Rubber stop inside aluminium holder	Yes	No	No	No	No	No
IN-102	4	1735	2100	60 Minutes	Timber veneered, non-tropical American Light Oak or equal approved	150 x 750mm vision panel to main leaf only. Glazing to be fire rated to achieve requirements	Grade 316 stainless steel tubular pull handle with Grade 316 stainless steel push plate	None	Grade 316 stainless steel Heavy-duty overhead closer	150mm tall S/S Kickplate to both sides of door	3no. pairs heavy duty Grade 316 stainless steel butt hinges	Rubber buffer door stops -Rubber stop inside aluminium holder	No	No	No	No	Yes	No
IN-103	1	910	2100	n/a	Timber veneered, non-tropical American Light Oak or equal approved	None	Grade 316 stainless steel tubular pull handle with Grade 316 stainless steel push plate	None	Grade 316 stainless steel Heavy-duty overhead closer	150mm tall S/S Kickplate to both sides of door	1 1/2 pairs heavy duty Grade 316 stainless steel butt hinges	Rubber buffer door stops -Rubber stop inside aluminium holder	No	Yes	No	No	No	No
IN-104	3	910	2100	n/a	Timber veneered, non-tropical American Light Oak or equal approved	None	Grade 316 stainless steel tubular pull handle with Grade 316 stainless steel push plate	Mortice lock with internal thumb-turn override	Grade 316 stainless steel Heavy-duty overhead closer	150mm tall S/S Kickplate to both sides of door	1 1/2 pairs heavy duty Grade 316 stainless steel butt hinges	Rubber buffer door stops -Rubber stop inside aluminium holder	No	No	No	No	No	Yes
IN-105	1	910	2100	n/a	Timber veneered, non-tropical American Light Oak or equal approved	None	Grade 316 stainless steel tubular pull handle with Grade 316 stainless steel push plate	None	Grade 316 stainless steel Heavy-duty overhead closer	150mm tall S/S Kickplate to both sides of door	1 1/2 pairs heavy duty Grade 316 stainless steel butt hinges	Rubber buffer door stops -Rubber stop inside aluminium holder	No	No	No	No	No	No
IN-106	1	910	2100	n/a	Timber veneered, non-tropical American Light Oak or equal approved	None	Grade 316 stainless steel tubular pull handle with Grade 316 stainless steel push plate	None	Grade 316 stainless steel Heavy-duty overhead closer	150mm tall S/S Kickplate to both sides of door	1 1/2 pairs heavy duty Grade 316 stainless steel butt hinges	Rubber buffer door stops -Rubber stop inside aluminium holder	No	No	Yes	No	No	No
IN-107	3	910	2100	30 Minutes	Timber veneered, non-tropical American Light Oak or equal approved	None	Grade 316 stainless steel tubular pull handle with Grade 316 stainless steel push plate	Mortice lock with internal thumb-turn override	Grade 316 stainless steel Heavy-duty overhead closer	150mm tall S/S Kickplate to both sides of door	1 1/2 pairs heavy duty Grade 316 stainless steel butt hinges	Rubber buffer door stops -Rubber stop inside aluminium holder	No	No	No	No	No	Yes
IN-108	1	910	2100	n/a	Timber veneered, non-tropical American Light Oak or equal approved	None	Grade 316 stainless steel tubular pull handle with Grade 316 stainless steel push plate	None	Grade 316 stainless steel Heavy-duty overhead closer	150mm tall S/S Kickplate to both sides of door	1 1/2 pairs heavy duty Grade 316 stainless steel butt hinges	Rubber buffer door stops -Rubber stop inside aluminium holder	No	No	No	No	No	No
IN-109	6	1010	2100	n/a	Timber veneered, non-tropical American Light Oak or equal approved	None	Lift to lock handle with external indicator	None	None	250mm tall S/S Kickplate to both sides of door	1 1/2 pairs heavy duty Grade 316 stainless steel butt hinges	Rubber buffer door stops -Rubber stop inside aluminium holder	Yes	No	No	No	No	No
IN-110	7	1010	2100	n/a	Timber veneered, non-tropical American Light Oak or equal approved	150 x 750mm vision panel to main leaf only. Glazing to be fire rated to achieve requirements	Grade 316 stainless steel tubular pull handle with Grade 316 stainless steel push plate	None	Grade 316 stainless steel Heavy-duty overhead closer	150mm tall S/S Kickplate to both sides of door	1 1/2 pairs heavy duty Grade 316 stainless steel butt hinges	Rubber buffer door stops -Rubber stop inside aluminium holder	No	No	No	No	No	No
IN-111	5	1735	2100	30 Minutes	Timber veneered, non-tropical American Light Oak or equal approved	None	Grade 316 stainless steel tubular pull handle with Grade 316 stainless steel push plate	Mortice lock with internal thumb-turn override	Grade 316 stainless steel Heavy-duty overhead closer	150mm tall S/S Kickplate to both sides of door	3no. pairs heavy duty Grade 316 stainless steel butt hinges	Rubber buffer door stops -Rubber stop inside aluminium holder	No	No	No	No	No	Yes
IN-112	5	1735	2100	30 Minutes	Timber veneered, non-tropical American Light Oak or equal approved	None	Grade 316 stainless steel tubular pull handle with Grade 316 stainless steel push plate	Mortice lock with internal thumb-turn override	Grade 316 stainless steel Heavy-duty overhead closer	150mm tall S/S Kickplate to both sides of door	3no. pairs heavy duty Grade 316 stainless steel butt hinges	Rubber buffer door stops -Rubber stop inside aluminium holder	No	No	No	No	No	Yes
IN-113	2	910	2100	60 Minutes	Timber veneered, non-tropical American Light Oak or equal approved	150 x 750mm vision panel to main leaf only. Glazing to be fire rated to achieve requirements	Grade 316 stainless steel tubular pull handle with Grade 316 stainless steel push plate	None	Grade 316 stainless steel Heavy-duty overhead closer	150mm tall S/S Kickplate to both sides of door	1 1/2 pairs heavy duty Grade 316 stainless steel butt hinges	Rubber buffer door stops -Rubber stop inside aluminium holder	No	No	No	No	Yes	Yes
02-A-Plant Deck																		
IN-201	2	910	2100	30 Minutes	Timber veneered, non-tropical American Light Oak or equal approved	150 x 750mm vision panel to main leaf only. Glazing to be fire rated to achieve requirements	Grade 316 stainless steel tubular pull handle with Grade 316 stainless steel push plate	Mortice lock with internal thumb-turn override	Grade 316 stainless steel Heavy-duty overhead closer	150mm tall S/S Kickplate to both sides of door	1 1/2 pairs heavy duty Grade 316 stainless steel butt hinges	Rubber buffer door stops -Rubber stop inside aluminium holder	No	No	No	No	Yes	No
IN-202	2	810	2100	60 Minutes	Timber veneered, non-tropical American Light Oak or equal approved	None	Grade 316 stainless steel tubular pull handle with Grade 316 stainless steel push plate	Mortice lock with internal thumb-turn override	Grade 316 stainless steel Heavy-duty overhead closer	150mm tall S/S Kickplate to both sides of door	1 1/2 pairs heavy duty Grade 316 stainless steel butt hinges	Rubber buffer door stops -Rubber stop inside aluminium holder	No	No	No	No	Yes	Yes



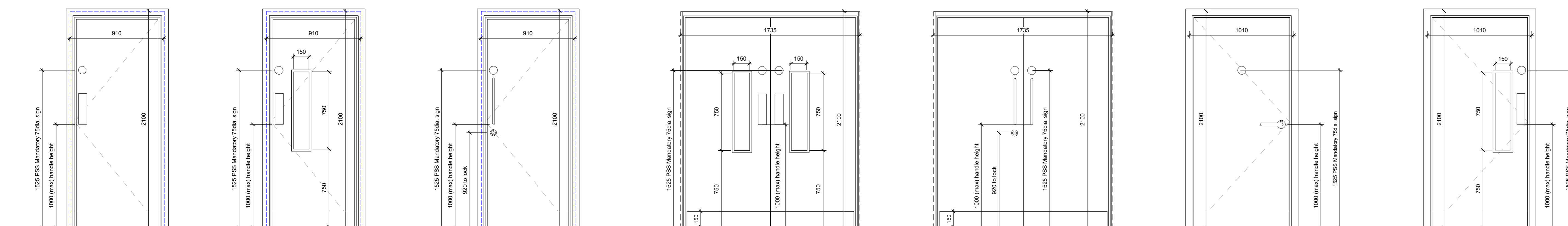
Typical Single Door Plan
1 : 20



Typical Single Acc. Door Plan
1 : 20



Typical Double Door Plan
1 : 20



Door Type 1 1 : 20
Door Type 2 1 : 20
Door Type 3 1 : 20
Door type 4 1 : 20
Door Type 5 1 : 20
Door Type 6 1 : 20
Door Type 7 1 : 20

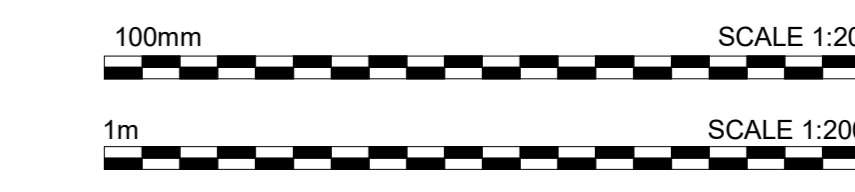
CR1	Construction Record Issue	LK	SW	27.08.24
C07	All internal doors to be timber veneered, non-tropical American Light Oak as per the specification	SW	LK	02.07.24
C08	Fire rating of door openings within the wall align to building regulations as per the specification and as confirmed by WtWvc: 05.06.24	SW	LK	26.06.24
C05	Door heights and depths altered in line with door manufacturer.	SW	LK	18.06.24
C04	Door type references and elevations added to drawing	SW	LK	17.06.24
C03	Fire strategy updated in line with comments from G&A and WtWvc, internal doors to whitewall still in abeyance awaiting comments	LK	SW	05.06.24
C02	Following confirmation of the whitewall fire rating as 120mm, the relevant doors have been amended	LK	SW	15.04.24
C01	Office plans with door references added to all sheets. Door elevations added with dimensions, schedule now reads frame height and width	SW	LK	26.03.24
P01	Preliminary Issue	SW	LK	24.11.23

rev | amendments | by | chd | date

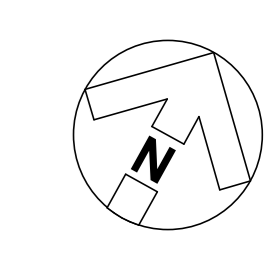
Horton Road, Poyle
Internal Door Schedule

Information Container LOIN
 LOD 1 | LOI 1
PANATTONI
 umc architects
 Newark, Beacon, California Way, Newark, Nottinghamshire, NG24 2TN
 +44 (0)1658 653027 | +44 (0)1658 653010 | info@panattoni.co.uk
 RIBA Plan Stage: Stage 4 - Detailed Design
 Document Substability: CR
 Drawn / Checked: SW/LK
 Date: 13/03/23
 Scale: As indicated © AD
 UMC Project Number: 22400
 Drawing no: P23025_UMC_BR_XX_SC_A_1505
 Revision: CR1

FINAL ISSUE
THIS DOCUMENT IS FOR INFORMATION ONLY AND SHOULD NOT BE USED FOR ANY OTHER PURPOSES.



Dimensions are in millimetres, unless stated otherwise.
 It is the recipient's responsibility to print this document to the correct scale.
 All the relevant drawings and specifications should be read in conjunction with this drawing.
 Scaling of this drawing is not recommended.



Key

FINISHES

- Walls**
- W01 Plaster/ dry lined and fully sealed. Painted with one mist coat and two coats Dulux Trade Diamond Matt emulsion paint RS4600 22815 'Swainsdown'.
- W02 Main Wall Tiles: 600mmx300mm Johnson Tiles Minerals Range MIN02N Dolomite Natural, laid/fix landscape format.
- W03 600mmx300mm Johnson Tiles MP06P Charcoal polished ceramic tiles laid/fix landscape format. Mechanical safety/retaining fixing system (RAU/FX or equal and approved) to be employed for all feature wall tiling 3.0m or more AFFL. Feature tiled wall to be 'framed' between walls or between projecting ribs constructed for this purpose. Feature tiled wall to be kept clear of any fixtures/fittings of any kind.
- W04 Feature Wall Tiles: 600mmx300mm Johnson Tiles Minerals Range MIN05N Slate Natural, laid/fix landscape format.
- W05 Splashback 200mmx100mmx6.5mm Johnsons Tiles 'Primalite' PFG1 White Gloss laid horizontally (landscape), with proprietary white gloss or brushed stainless steel trims to all edges. Ceramic tiled splashback above all worktops taken up to underside of wall cupboards.
- W06 Full height IPS to WCs, Urinals and vanity units. Refer to specification for further details.
- Floors**
- F01 Power floated concrete or screed finish.
- F02 600mmx600mmx11mm ceramic floor tiles Johnson Tiles Minerals Range MINGSG 'Limestone Grip'
- F03 600mmx600mm Johnson Tiles Minerals Range MIN05G Slate Grip;
- F05 200mmx200mmx3.3mm ceramic floor tiles Johnson Tiles Kerastar KER558 'Clay Speckle' Natural.
- F06 Interface Transformation 'Fern' 1628010 carpet tiles
- F07 Matwell
To be supplied by CFS, Stockdale range
Colour: Charcoal - 3923
- Ceiling**
- C01 600x600mm wide Armstrong Dune eVo Regular tiles in lay-in grid system with a stove enamelled finish on wire hangers. (3100mm high).
- C02 600x600mm wide Armstrong Dune eVo or similar moisture resistant tiles in lay-in grid system. (3100mm high).
- C03 Dulux Absolute White vinyl matt emulsion painted moisture-resistant plasterboard ceiling above WC cubicles and wash basins.
- C04 Minimum 600mm(W) x 100mm(D) Dulux Absolute White vinyl matt emulsion painted plasterboard/ MF flat bulkhead.
- C05 Dulux Absolute White vinyl matt emulsion painted plasterboard/ MF flat bulkhead to offices.
- C06 100mm Firemaster Panel fixed to the u/s of deck soffit.
Plasterboarded with taped joints, sealed with one mist coat and two coats of Dulux Absolute White vinyl matt emulsion.
- C07 No ceiling
- Skirtings**
- S01 600mmx50mmx20mm ceramic tiles Johnson Tiles Minerals Range MIN05N 'Slate Natural'
- S02 200mmx100mmx8.3 Johnson Tiles Kerastar KER558 Clay Speckle Natural.
- S03 600mmx100mm Johnson Tiles Minerals Range MIN05N Slate Natural.
- S04 Ex 100mmx25mm hardwood to match the door veneer, splayed skirting for clear finishing.

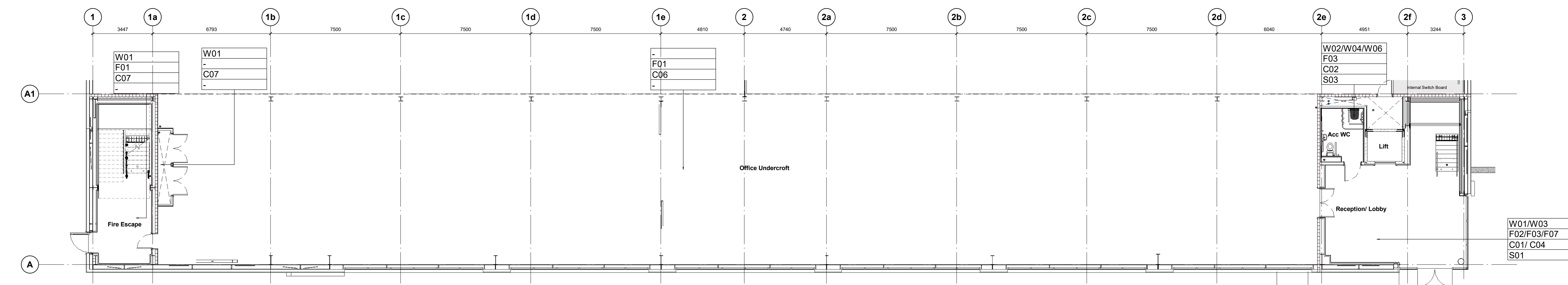
NOTE:

For further detail on finishes see individual finishes drawings.
 P23025_UMC_BR_ZZ_DR_A_1201 Office Ceiling Finishes
 P23025_UMC_BR_ZZ_DR_A_1208 Office Floor Finishes
 P23025_UMC_BR_ZZ_DR_A_1209 Office Wall Finishes

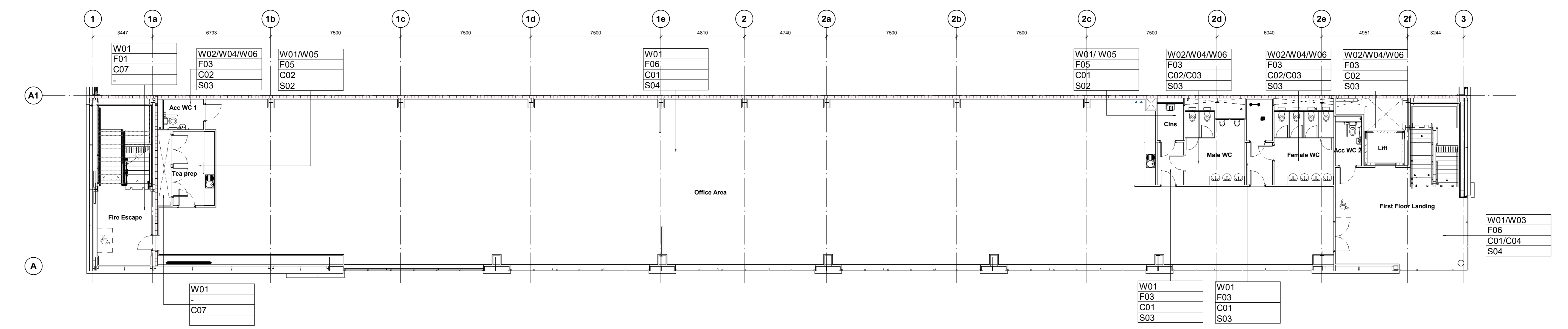
CR1	Construction Record Issue	LK	SW	27.08.24
C02	Drawing revised to include CAT labors as per Minutes email 22070725; carpet finishes updated to stairs and main office to be Fern as agreed with Panattoni, which back included to designers store	LK	SW	23.07.24
C01	Office finishes schedule amended to align with individual finishes drawings	SW	LK	05.03.24
P02	Issued for review and comment	SW	LK	08.12.23
P01	Preliminary Issue	SW	LK	24.11.23

amendments by [chk] date

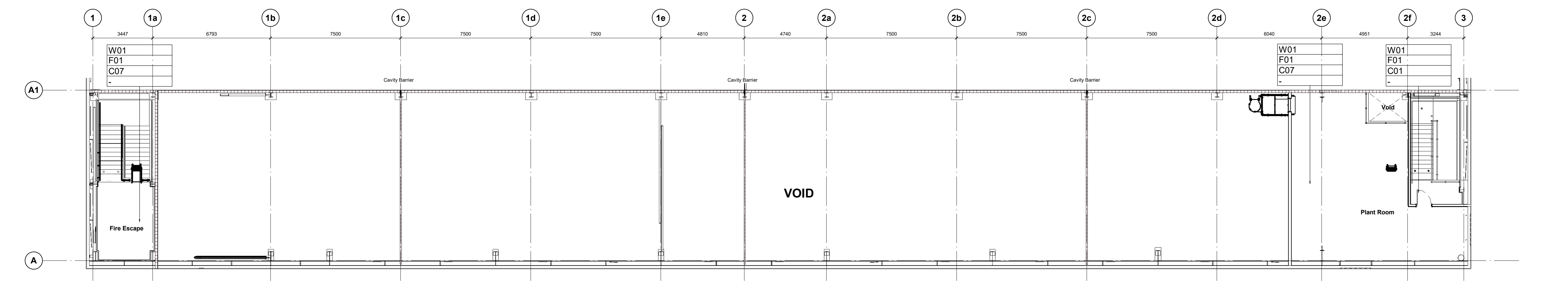
Horton Road, Poyle
Office Finishes



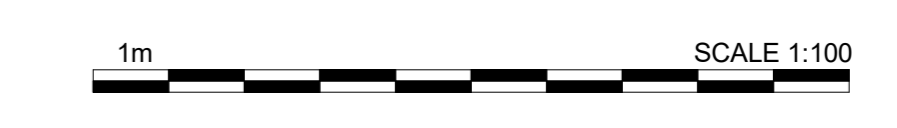
Ground Floor Office Plan
1 : 100



First Floor Office Plan
1 : 100



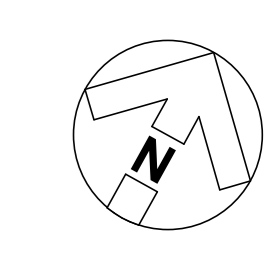
Plant Deck Plan
1 : 100



FINAL ISSUE
 THIS DRAWING IS NOT TO BE USED FOR ANY OTHER PURPOSES

Information Container LOIN	
LOD 4	LOI 2
PANATTONI	
 umc architects	
Newark Beacon, Caldera Way, Newark, Nottinghamshire, NG24 2TN +44 (0)1636 650327 +44 (0)1636 650310 #UK@panattoni.com	
RIBA Plan Stage: Stage 4 - Detailed Design Document Suitability: CR Drawn / Checked: SW/LK Date: 10/03/23 Scale: As indicated © AD UMC Project Number: 22400	Drawing no: P23025_UMC_BR_ZZ_DR_A_1206 Revision: CR1

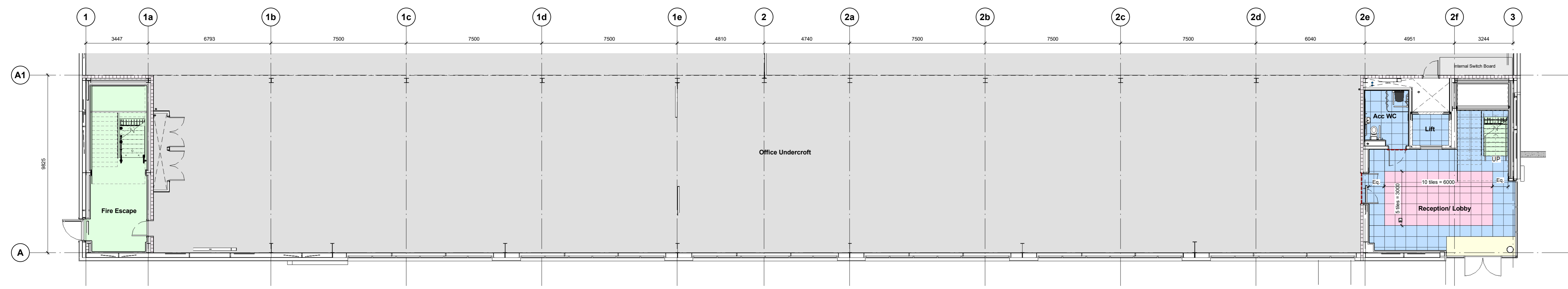
- Dimensions are all in millimetres, unless stated otherwise.
 - It is the recipient's responsibility to print this document to the correct scale.
 - All the relevant drawings and specifications should be read in conjunction with this drawing.
 - Scaling of this drawing is not recommended.



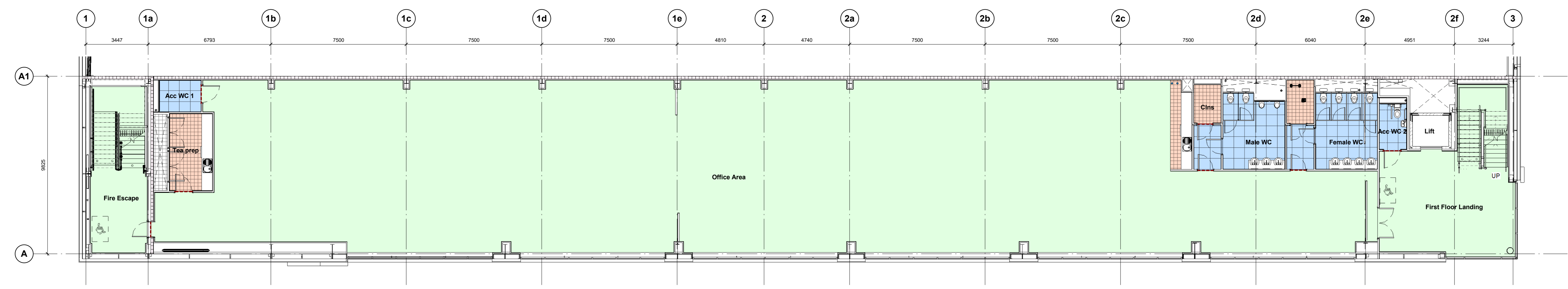
Key

- FLOOR FINISHES**
- F01 Power floated concrete or screed finish.
 - F02/F03 600mmx600mmx11mm ceramic floor tiles Johnson Tiles Minerals Range MIN03G 'Limestone Grip'
 - 600mmx600mm Johnson Tiles Minerals Range MIN05G 'Slate Grip'
 - Skirting (S01) 600mmx50mmx8mm ceramic tiles Johnson Tiles Minerals Range MIN05N 'Slate Natural'
 - F03 600mmx600mm Johnson Tiles Minerals Range MIN05G 'Slate Grip'
 - Skirting (S03) 600mmx100mm Johnson Tiles Minerals Range MIN05N 'Slate Natural'
 - F05 200mmx200mmx8.3mm ceramic floor tiles Johnson Tiles Kerastar KER558 'Clay Speckle' Natural.
 - Skirting (S02) 200mmx100mmx8.3 Johnson Tiles Kerastar KER558 'Clay Speckle' Natural.
 - F06 Interface Transformation 'Fenri' 1620/10 carpet tiles
 - Skirting (S04) Ex 100mmx25mm hardwood to match the door veneer, splayed skirting for clear finishing.
 - F07 Matwell To be supplied by CFS, Stockdale range Colour: Chacoal - 3923
 - F08 Fire retardant GRP grating

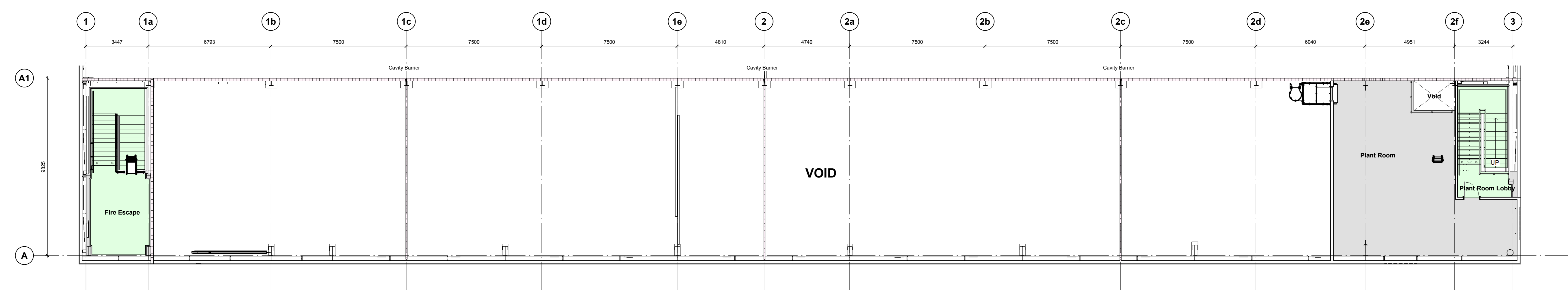
NOTE:
 Installation of a transition strip between all changes in floor finishes.



Ground Floor Office Plan
 1 : 100



First Floor Office Plan
 1 : 100



Plant Deck Plan
 1 : 100

CR1	Construction Record Issue	LK	SW	27.08.24
C08	Drawing revised to include CAT ladder as per Winvic email 22/07/24, carpet finishes updated to stone and main office to be foam as agreed with Panattoni, splash back included to cleaners store	LK	SW	23.07.24
C05	Staircase and landing finishes added to drawing following confirmation in client meeting on 25.06.24	SW	LK	26.06.24
C04	Floor finish in the store amended to F05	SW	LK	07.06.24
C03	Reception Lobby floor finish amended to align with ceiling tile setting out. Lift floor finish added to align with reception lobby.	SW	LK	06.06.24
C02	Tiled flooring added to the open tea prep on first floor. Tiled flooring in the reception area rationalised.	SW	LK	07.05.24
C01	Drawing updated following acceptance of layout reconfiguration. Office grids added to drawing.	SW	LK	05.03.24
P01	Issued for review and comment	SW	LK	30.01.24
rev	amendments	by	ckd	date

Horton Road, Poyle
 Office Floor Finishes

Information Container LOIN

LOD 4	LOI 2
-------	-------

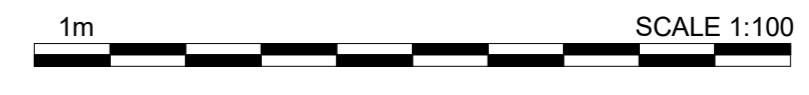
PANATTONI

umc architects

Newark Beacon, Caldera Way, Newark, Nottinghamshire, NG24 2TN
 +44 (0)1636 653027 +44 (0)1636 653010 #RUGBmarchitects

RIBA Plan Stage:	Stage 4 - Detailed Design
Document Suitability:	CR
Drawn / Checked:	SW/LK
Date:	12/01/23
Scale:	As indicated © AD
UMC Project Number:	22400

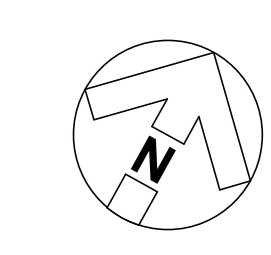
Document Reference: Drawing no: Revision:
 P23025_UMC_BR_ZZ_DR_A_1208 CR1



FINAL ISSUE

THIS DOCUMENT IS INTENDED FOR CONSTRUCTION ONLY AND SHOULD NOT BE USED FOR ANY OTHER PURPOSES.

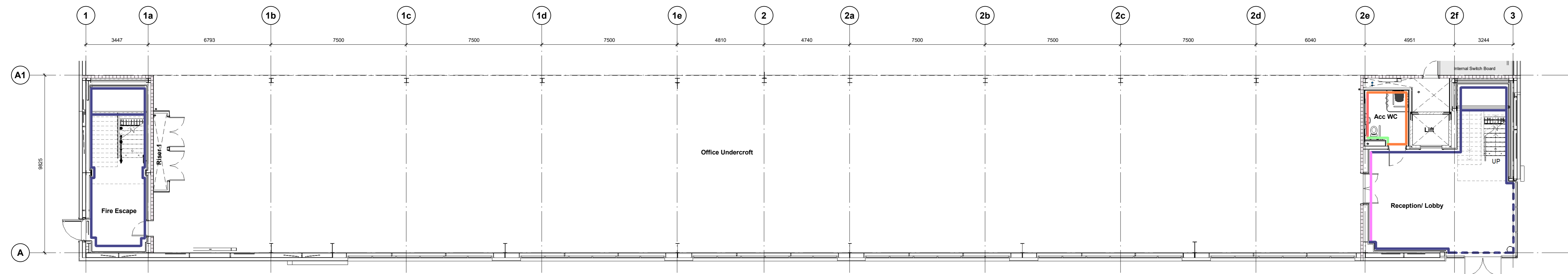
Dimensions are all in millimetres, unless stated otherwise.
 It is the recipient's responsibility to print this document to the correct scale.
 All the relevant drawings and specifications should be read in conjunction with this drawing.
 Scaling of this drawing is not recommended.



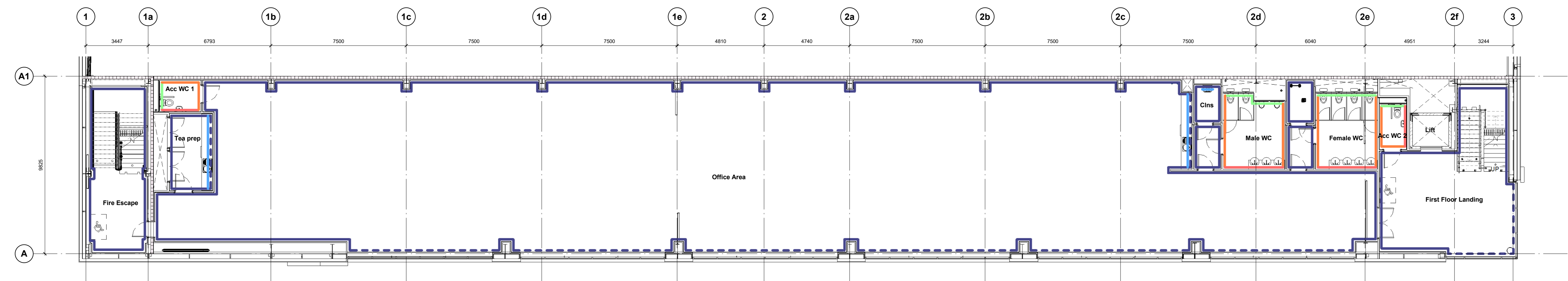
Key

WALL FINISHES

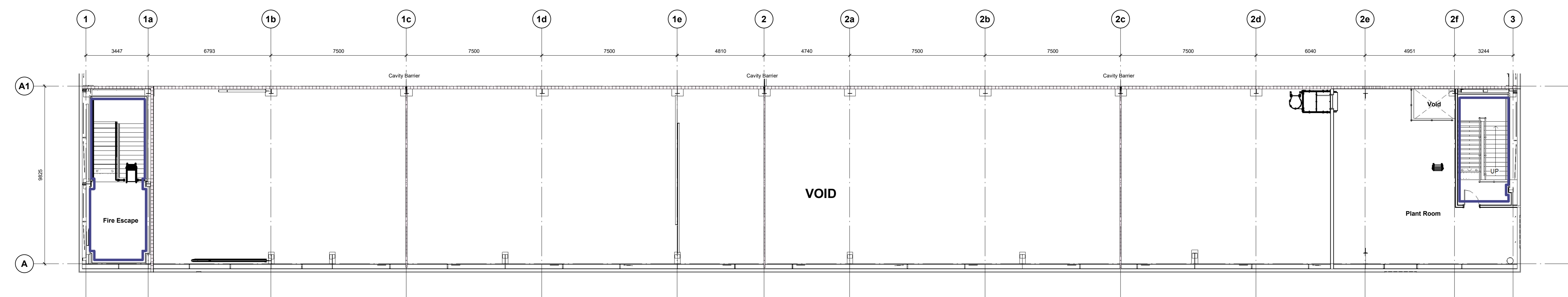
- ▬ **W01** Plaster/dry lined and fully sealed. Painted with one mist coat and two coats Dulux Trade Diamond Matt emulsion paint BS4809 22B15 'Swainsdown'.
- ▬ **W02** Main Wall Tiles: 600mmx300mm Johnson Tiles Minerals Range MN02N Doolittle Natural, laid/flush landscape format.
- ▬ **W03** 600mmx300mm Johnson Tiles IMP05P Charcoal polished ceramic tiles laid/flush landscape format. Mechanical safety/retaining fixing system (FABRIX or equal and approved) to be employed for all feature wall tiling 3.0m or more AFLL. Feature tiled wall to be 'framed' between walls or between projecting ribs constructed for this purpose. Feature tiled wall to be kept clear of any fixtures/fittings of any kind.
- ▬ **W04** Feature Wall Tiles: 600mmx100mm Johnson Tiles Minerals Range MN05N Slate Natural, laid/flush landscape format.
- ▬ **W05** Splashback 200mmx100mmx6.5mm Johnsons Tiles 'Prismatic' PRG1 White Gloss laid horizontally (landscape), with proprietary white gloss or brushed stainless steel trims to all edges. Ceramic tiled splashback above all worktops taken up to underside of wall cupboards.
- ▬ **W06** Full height IPS to WCs, Urinals and vanity units. Refer to specification for further details.



Ground Floor Office Plan
1: 100



First Floor Office Plan
1: 100



Plant Deck Plan
1: 100

CR1	Construction Record Issue	LK	SW	27.08.24
CO3	Drawing revised to include CAT ladder as per Winwin email 22072024, ceiling finishes updated to stairs and main office to be Fern as agreed with Panattoni, splash back included to cleaners store	LK	SW	23.07.24
CO2	Ground floor reception lobby arrangement finishes update to reflect latest layout. Finishes amended to reflect revising of the Acc. WC.	SW	LK	05.06.24
CO1	Drawing updated following acceptance of layout reconfiguration. Office grids added to drawing.	SW	LK	05.03.24
P01	Issued for review and comment	SW	LK	30.01.24
rev	amendments	by	ckd	date

Horton Road, Poyle
Office Wall Finishes

Information Container LOIN

LOD 4	LOI 2
-------	-------

PANATTONI

umc architects

Newark Beacon, Caldera Way, Newark, Nottinghamshire, NG24 2TN
+44 (0)1636 650327 +44 (0)1636 650310 #HQ@panattoni.com

RIBA Plan Stage: Stage 4 - Detailed Design
Document Suitability: CR
Drawn / Checked: SW/LK
Date: 24/01/2024
Scale: As indicated @ A0
UMC Project Number: 22400

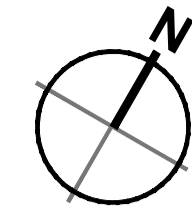
Document Reference: Drawing no: Revision:
P23025_UMC_BR_ZZ_DR_A_1209 CR1



FINAL ISSUE

THIS DOCUMENT IS THE PROPERTY OF PANATTONI AND SHOULD NOT BE DISTRIBUTED TO OTHERS.

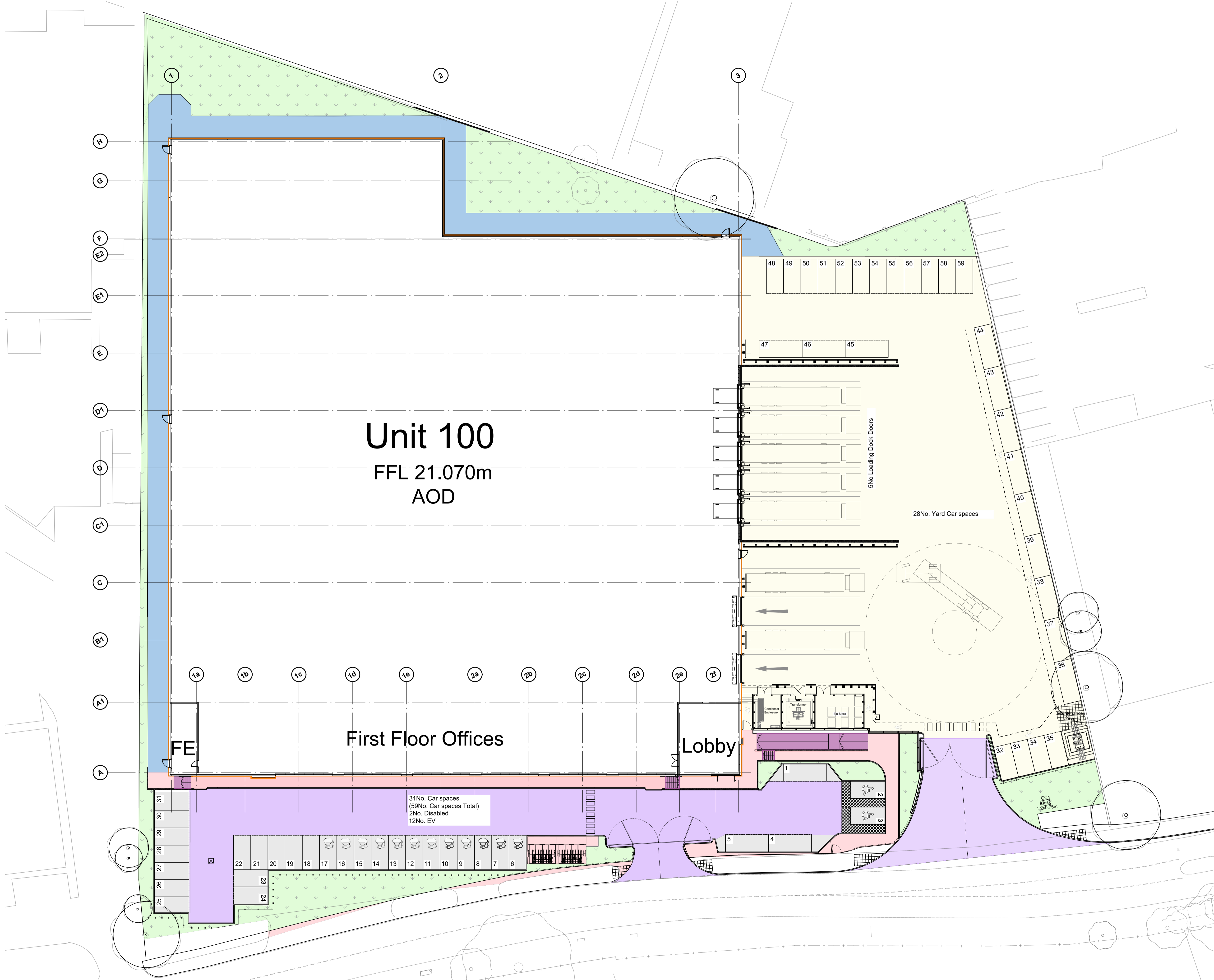
- Dimensions are in millimeters, unless stated otherwise.
 - Scaling of this drawing is not recommended.
 - It is the recipient's responsibility to print this document to the correct scale.
 - All relevant drawings and specifications should be read in conjunction with this drawing.



Planning Application Boundary

External Finishes Key

- Pedestrian Access Area: Block Paving**
Marshalls Keyblok 60mm thick natural coloured concrete block paving.
- Stairs and Ramp: Block Paving**
Marshalls Keyblok 60mm thick contrasting colour.
- Vehicle Access Area (car park: permeable block paving)**
Marshalls Keyblok 60mm Brindle coloured concrete block paving, laid to herringbone.
Disabled and EV parking symbols, as well as car parking spaces are to be delineated by the use of 'hit and miss' Marshalls Colourtop white keyblock contrasting block or equal approved.
- Car Park Surfacing**
100mm consolidated thickness of two course bituminous Macadam.
White lining to circulation areas to be 75mm thick.
- Landscaping**
To Stephenson Halliday details.
- H.G.V External Yard**
100mm thick (J.N.O), Grade C32/40AE concrete slab with brushed finish.
100mm trowelled margins adjacent to shutters.
White lining to circulation areas to be 75mm thick.
- Building Perimeter Pavment**
Brushed Concrete
- Gravel Margin**
100mm



CR1	Construction Record Information	LK	SW	27.08.24
C02	Perimeter path updated to suit comments from UKWS regarding 2.8m construction zone	LK	SW	06.03.24
C01	Updated to include for the current site arrangement 16.02.24 and the inclusion of the external finishes stated in the specification	SW	LK	16.02.24
P01	Preliminary Issue	SW	LK	27.11.23
rev	amendments	by	ckd	date

Horton Road, Poyle

External Finishes	
Information Container LOD:	LOD 400

PANATTONI



Newark Bascon, Calfertia Way, Newark, Nottinghamshire NG24 2TN
 t. +44 (0)1636 653027 e. info@umcarchitects.com

RIBA PoW Stage:	5 - Construction
Document Suitability:	CR
Drawn / Checked:	JL / LK
Date:	21/03/2023
Scale:	1:250 A1
UMC Project Number:	22400
Document Reference:	Drawing no: Revision:
P23025_UMC_EX_00_DR_A	0703 CR1

FINAL ISSUE
 THIS DRAWING IS TO BE USED FOR THE STATED PURPOSE ONLY AND SHOULD NOT BE USED FOR ANY OTHER

External Finishes Plan
 Scale 1:250

